

## CHILD PROTECTIVE SERVICES (CPS)

Child maltreatment is a serious problem that has grave and costly consequences for the child, his or her family and the community at-large. A child who has experienced abuse and neglect is more likely to have social, emotional and physical health problems and perform poorly in school.

### Indicator

#### Child Abuse and Neglect Reports

Total reported incidents of suspected child abuse and neglect through the ChildLine Registry. (Number and rate per 1,000 children age 0-17)

Indicator	2011		2012		2013		2014		2015		Rural-Mix % Change 2011 to 2015	State % Change 2011 to 2015
	Rural-Mix	State	Rural-Mix	State	Rural-Mix	State	Rural-Mix	State	Rural-Mix	State		
Child Abuse and Neglect Reports	3,700	24,378	4,170	26,664	4,238	26,944	4,641	29,273	6,853	40,590	85.2%	66.5%
	9.1	8.7	10.2	9.5	10.4	9.6	11.4	10.5	16.8	14.5		

#### Child Abuse and Neglect Substantiations

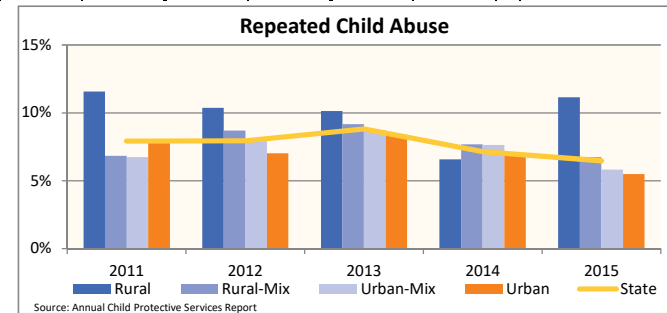
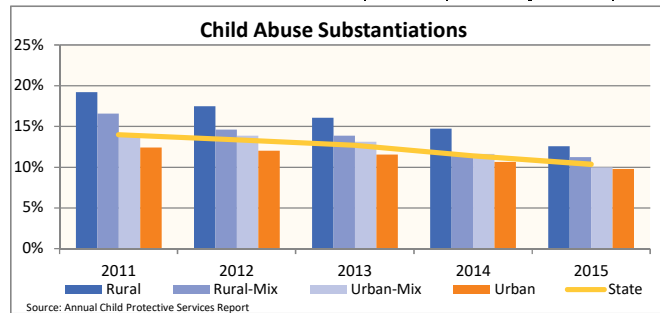
Founded or indicated reports of child abuse and/or neglect.

Indicator	2011	2012	2013	2014	2015	Rural-Mix % Change 2011 to 2015	State % Change 2011 to 2015
Child Abuse and Neglect Substantiations	16.6%	14.0%	14.6%	13.4%	13.9%	-32.3%	-25.9%

#### Repeated Child Abuse and Neglect

Children with another substantiated incident of abuse and/or neglect following the first reported incident. (Data may be overstated.)

Indicator	2011	2012	2013	2014	2015	Rural-Mix % Change 2011 to 2015	State % Change 2011 to 2015
Repeated Child Abuse and Neglect	6.8%	7.9%	8.7%	7.9%	9.2%	-1.3%	-18.3%
	1 in 15	1 in 13	1 in 11	1 in 13	1 in 11		



## GENERAL PROTECTIVE SERVICES (GPS)

Pennsylvania has a differential response system in that reports not alleging abuse of a child are categorized as general protective services (GPS) reports. Addressing concerns related to child safety and well-being before allegations of child abuse or severe neglect are made enables children to remain safely in their own homes while services are provided to the family to mitigate the risk of potential maltreatment.

### Indicator

#### GPS Reports

Total reported concerns of general neglect, not alleging child abuse. General neglect concerns may include parental substance abuse, inadequate shelter or supervision, parent-child conflict or truancy concerns.

Indicator	2011		2012		2013		2014		2015		Rural-Mix % Change 2011 to 2015	State % Change 2011 to 2015
	Rural-Mix	State	Rural-Mix	State	Rural-Mix	State	Rural-Mix	State	Rural-Mix	State		
GPS Reports	-	-	-	-	-	-	-	-	23,487	131,953	-	-

#### Valid Reports

Reports of general neglect in which the allegations were found to have merit. Includes reports accepted for in-home services and reports referred out to community agencies for services.

Indicator	2011	2012	2013	2014	2015	Rural-Mix % Change 2011 to 2015	State % Change 2011 to 2015
Valid Reports	-	-	-	-	20.4%	-	-

#### Unduplicated Number of Children Served

Children who received in-home services along with parents to address concerns related to child safety and well-being.

Indicator	2012		2013		2014		2015		2016		% Change 2012 to 2016	% Change 2012 to 2016
	Rural-Mix	State	Rural-Mix	State	Rural-Mix	State	Rural-Mix	State	Rural-Mix	State		
Unduplicated Number of Children Served	30,712	164,842	32,285	172,807	30,494	167,582	35,387	181,371	36,232	190,413	18.0%	15.5%

## FOSTER CARE - SERVED

Foster care is meant to be a temporary intervention to assure the safety and well-being of a child. A child who spends long periods in foster care is more likely than other children to drop out of school, have mental health challenges, and experience unemployment and/or homeless as an adult. The following shows the past five years of data regarding children served in foster care during each federal fiscal year.

### Indicator

#### Unduplicated Number of Children Served

All Children in Foster Care During the Year  
(Rate per 1,000 children age 0-20)

	2012		2013		2014		2015		2016		Rural-Mix % Change 2012 to 2016	State % Change 2012 to 2016
	Rural-Mix	State	Rural-Mix	State	Rural-Mix	State	Rural-Mix	State	Rural-Mix	State		
	2,969	22,000	2,713	21,416	2,743	22,510	2,805	22,980	3,123	24,543	5.2%	11.6%
	6.1	6.5	5.6	6.4	5.7	6.7	5.8	6.8	6.5	7.3		

### By Age

Age Group	2012 Rural-Mix	2012 State	2013 Rural-Mix	2013 State	2014 Rural-Mix	2014 State	2015 Rural-Mix	2015 State	2016 Rural-Mix	2016 State	% Change 2012 to 2016
0-2	19.3%	18.9%	20.2%	19.2%	20.1%	19.4%	21.1%	19.9%	23.8%	20.2%	23.3%
3-5	16.2%	15.6%	15.6%	15.9%	16.6%	16.8%	16.8%	17.1%	16.5%	17.0%	1.6%
6-8	11.1%	10.8%	12.2%	11.5%	12.7%	12.3%	12.5%	12.9%	12.2%	13.0%	9.7%
9-11	8.4%	8.9%	8.2%	8.9%	9.8%	9.5%	9.7%	10.0%	9.9%	11.0%	17.9%
12-14	13.2%	12.0%	11.6%	11.4%	11.4%	10.9%	11.4%	11.6%	11.6%	11.2%	-12.7%
15-17	24.7%	23.3%	24.5%	22.3%	22.7%	21.4%	21.6%	20.4%	21.0%	19.6%	-14.9%
18-20	7.0%	10.5%	7.7%	10.7%	6.8%	9.8%	6.1%	8.3%	5.0%	7.9%	-28.2%
Infants (age 0-1)	13.3%	12.2%	12.6%	11.9%	12.8%	12.5%	14.4%	12.8%	16.0%	12.8%	20.4%
Youth (age 13+)	39.2%	42.4%	41.2%	41.5%	38.0%	38.9%	36.3%	36.7%	34.6%	35.5%	-11.6%

### By Race and Ethnicity

Race/Ethnicity	2012 Rural-Mix	2012 State	2013 Rural-Mix	2013 State	2014 Rural-Mix	2014 State	2015 Rural-Mix	2015 State	2016 Rural-Mix	2016 State	% Change 2012 to 2016
Non-Hispanic White	75.2%	43.3%	75.5%	41.8%	74.3%	42.3%	73.5%	40.9%	74.4%	42.5%	-1.1%
Non-Hispanic Black or African American	15.3%	34.9%	13.5%	34.8%	12.9%	35.2%	12.2%	34.6%	10.7%	35.3%	-30.0%
Non-Hispanic Other Race	1.0%	6.5%	1.3%	7.0%	1.4%	4.4%	1.4%	5.9%	1.1%	3.3%	7.3%
Non-Hispanic Two or More Races	2.4%	3.2%	3.8%	3.9%	4.7%	4.9%	6.7%	5.3%	7.0%	5.4%	198.8%
Hispanic or Latino	6.1%	12.0%	5.9%	12.5%	6.7%	13.1%	6.1%	13.4%	6.7%	13.4%	10.9%

### By Gender

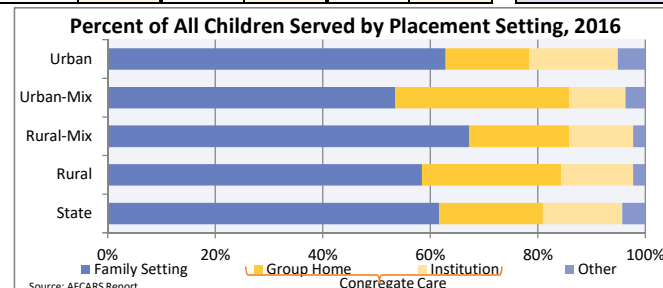
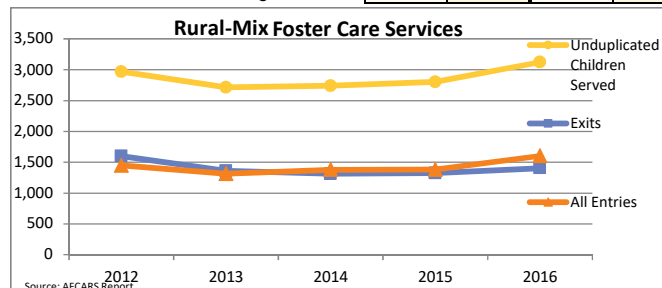
Gender	2012 Rural-Mix	2012 State	2013 Rural-Mix	2013 State	2014 Rural-Mix	2014 State	2015 Rural-Mix	2015 State	2016 Rural-Mix	2016 State	% Change 2012 to 2016
Male	51.1%	50.5%	53.0%	50.8%	52.8%	50.8%	53.7%	51.0%	53.5%	51.2%	4.8%
Female	48.9%	49.5%	47.0%	49.2%	47.2%	49.2%	46.3%	49.0%	46.5%	48.8%	-5.0%

### By First Placement Setting

Placement Setting	2012 Rural-Mix	2012 State	2013 Rural-Mix	2013 State	2014 Rural-Mix	2014 State	2015 Rural-Mix	2015 State	2016 Rural-Mix	2016 State	% Change 2012 to 2016
<b>Family Setting</b>	<b>71.7%</b>	<b>72.8%</b>	<b>71.5%</b>	<b>73.4%</b>	<b>73.8%</b>	<b>75.8%</b>	<b>73.6%</b>	<b>77.1%</b>	<b>77.7%</b>	<b>79.0%</b>	<b>8.3%</b>
Pre-adoptive Home	3.6%	3.2%	2.3%	3.4%	2.4%	3.5%	1.9%	3.1%	1.8%	4.5%	-50.7%
Foster Family Home – Relative	16.9%	24.4%	17.4%	24.8%	19.2%	29.6%	21.4%	31.5%	25.3%	34.1%	49.4%
Foster Family Home – Non-Relative	51.3%	45.2%	51.8%	45.2%	52.2%	42.7%	50.3%	42.5%	50.7%	40.5%	-1.1%
<b>Congregate Care Setting</b>	<b>19.9%</b>	<b>20.6%</b>	<b>19.3%</b>	<b>19.6%</b>	<b>18.7%</b>	<b>18.3%</b>	<b>17.9%</b>	<b>17.1%</b>	<b>16.0%</b>	<b>15.8%</b>	<b>-19.5%</b>
Group Home	13.9%	12.5%	13.5%	12.1%	12.6%	11.6%	11.2%	10.5%	10.0%	9.1%	-28.6%
Institution	6.0%	8.0%	5.9%	7.5%	6.1%	6.8%	6.7%	6.6%	6.1%	6.8%	1.5%
<b>Supervised Independent Living</b>	<b>0.6%</b>	<b>1.8%</b>	<b>0.8%</b>	<b>2.0%</b>	<b>0.7%</b>	<b>1.9%</b>	<b>1.0%</b>	<b>1.7%</b>	<b>0.8%</b>	<b>1.6%</b>	<b>37.3%</b>
Runaway	0.8%	1.4%	0.8%	1.8%	0.7%	1.2%	0.4%	1.3%	0.2%	1.4%	-75.2%
Trial Home Visit	6.9%	3.4%	7.6%	3.2%	6.1%	2.8%	7.2%	2.9%	5.2%	2.2%	-24.8%

### Children Entering Foster Care

Year	2012 Rural-Mix	2012 State	2013 Rural-Mix	2013 State	2014 Rural-Mix	2014 State	2015 Rural-Mix	2015 State	2016 Rural-Mix	2016 State	% Change 2012 to 2016
All Entries into Foster Care During the Year	1,451	9,793	1,314	9,306	1,379	10,364	1,381	10,387	1,602	10,567	10.4%



## FOSTER CARE - FIRST TIME ENTRIES

Data on first time entries provides information on children who have just begun their foster care experience during the past federal fiscal year. How the child welfare system is serving them may say something about current system practice and decision making.

### Indicator

#### Children Entering for the First Time

First Time Entries During the Year  
(Rate per 1,000 children age 0-20)

First Time Entries as Percent of All Entries

Indicator	2012		2013		2014		2015		2016		Rural-Mix % Change 2012 to 2016	State % Change 2012 to 2016
	Rural-Mix	State	Rural-Mix	State	Rural-Mix	State	Rural-Mix	State	Rural-Mix	State		
First Time Entries During the Year (Rate per 1,000 children age 0-20)	1,064	7,018	957	6,698	1,031	7,592	1,097	7,843	1,291	8,082	21.3%	15.2%
First Time Entries as Percent of All Entries	73.3%	71.7%	72.8%	72.0%	74.8%	73.3%	79.4%	75.5%	80.6%	76.5%	9.9%	6.7%

#### By Age

Age Group	2012	2013	2014	2015	2016	Rural-Mix % Change 2012 to 2016	State % Change 2012 to 2016
0-2	31.1%	32.2%	31.1%	32.7%	33.3%	16.5%	3.4%
3-5	13.9%	14.2%	13.7%	14.9%	14.7%	2.5%	3.4%
6-8	9.1%	10.1%	9.3%	11.0%	12.5%	30.0%	23.7%
9-11	8.4%	8.6%	8.2%	9.2%	9.6%	-8.3%	11.2%
12-14	16.1%	14.4%	13.6%	12.7%	12.6%	-29.2%	-13.1%
15-17	21.4%	20.4%	24.1%	18.0%	17.2%	-14.0%	-15.5%
18-20	0.0%	0.0%	0.0%	0.1%	0.1%	-	334.2%
Infants (age 0-1)	25.8%	26.2%	24.2%	26.3%	26.3%	12.5%	0.5%
Youth (age 13+)	33.1%	31.2%	35.1%	27.6%	26.6%	-17.8%	-14.9%

#### By Race and Ethnicity

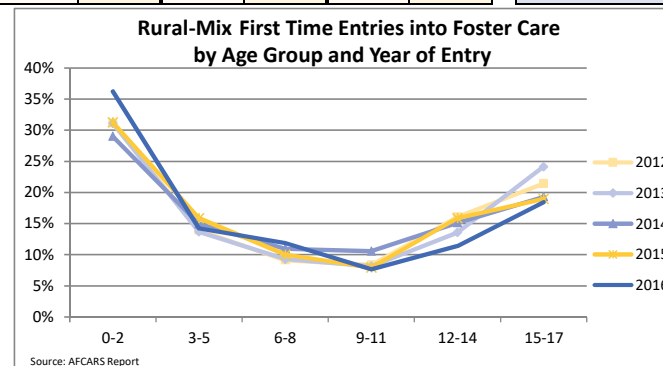
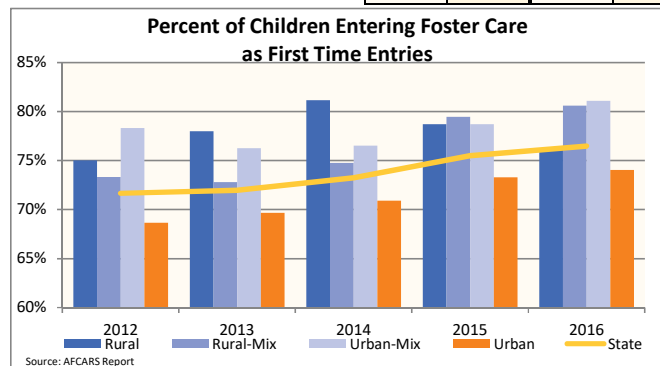
Race/Ethnicity	2012	2013	2014	2015	2016	Rural-Mix % Change 2012 to 2016	State % Change 2012 to 2016
Non-Hispanic White	75.4%	49.3%	75.1%	46.9%	49.4%	-1.4%	0.3%
Non-Hispanic Black or African American	16.1%	31.9%	13.2%	11.7%	28.6%	-41.2%	-10.5%
Non-Hispanic Other Race	1.2%	4.1%	1.8%	1.5%	4.1%	33.1%	-1.8%
Non-Hispanic Two or More Races	1.9%	3.0%	3.9%	8.0%	5.4%	275.0%	79.9%
Hispanic or Latino	5.5%	11.7%	6.1%	6.0%	12.6%	39.3%	7.8%

#### By Gender

Gender	2012	2013	2014	2015	2016	Rural-Mix % Change 2012 to 2016	State % Change 2012 to 2016
Male	51.7%	49.9%	52.8%	52.9%	50.8%	2.7%	1.9%
Female	48.3%	50.1%	47.2%	47.1%	49.2%	-2.9%	-1.9%

#### By First Placement Setting

Placement Setting	2012	2013	2014	2015	2016	Rural-Mix % Change 2012 to 2016	State % Change 2012 to 2016
<b>Family Setting</b>	<b>74.8%</b>	<b>76.4%</b>	<b>70.8%</b>	<b>80.7%</b>	<b>82.3%</b>	<b>10.6%</b>	<b>7.7%</b>
Pre-adoptive Home	0.0%	0.2%	0.2%	0.1%	0.2%	-	45.9%
Foster Family Home – Relative	17.2%	25.8%	16.6%	22.6%	37.5%	59.9%	45.1%
Foster Family Home – Non-Relative	57.6%	50.4%	54.0%	47.5%	44.6%	-4.5%	-11.5%
<b>Congregate Care Setting</b>	<b>21.5%</b>	<b>21.1%</b>	<b>25.4%</b>	<b>17.5%</b>	<b>15.9%</b>	<b>-27.7%</b>	<b>-24.5%</b>
Group Home	16.4%	14.7%	20.0%	13.3%	9.7%	-37.8%	-33.9%
Institution	5.1%	6.4%	5.4%	7.0%	6.2%	5.3%	-2.9%
<b>Supervised Independent Living</b>	<b>0.0%</b>	<b>0.2%</b>	<b>0.2%</b>	<b>0.1%</b>	<b>0.2%</b>	<b>-</b>	<b>11.4%</b>
Runaway	0.3%	0.4%	0.5%	0.3%	0.6%	-45.1%	31.3%
Trial Home Visit	3.4%	1.9%	3.0%	1.2%	1.0%	-56.5%	-46.6%



## FOSTER CARE - RE-ENTRIES

Data on re-entries provides information on children who come back into foster care because of new or continuing challenges at home. Some children experience numerous foster care episodes or cycle in and out of the system. Others can experience large spans of time between foster care episodes, which is why the age of children who re-enter is typically older.

### Indicator

#### Children Re-Entering Foster Care

Re-Entries During the Year  
Re-Entries as Percent of All Entries

Indicator	2012		2013		2014		2015		2016		Rural-Mix % Change 2012 to 2016	State % Change 2012 to 2016
	Rural-Mix	State	Rural-Mix	State	Rural-Mix	State	Rural-Mix	State	Rural-Mix	State		
Children Re-Entering Foster Care	387	2,775	357	2,608	348	2,772	284	2,544	311	2,485	-19.6%	-10.5%
	26.7%	28.3%	27.2%	28.0%	25.2%	26.7%	20.6%	24.5%	19.4%	23.5%	-27.2%	-17.0%

### By Age

Age Group	2012 Rural-Mix	2012 State	2013 Rural-Mix	2013 State	2014 Rural-Mix	2014 State	2015 Rural-Mix	2015 State	2016 Rural-Mix	2016 State	% Change 2012 to 2016
0-2	9.3%	8.5%	7.6%	6.6%	8.9%	8.2%	10.2%	10.8%	9.3%	11.2%	0.2%
3-5	12.4%	9.5%	10.9%	7.8%	10.6%	9.2%	12.0%	11.4%	10.3%	9.7%	-17.0%
6-8	7.2%	6.5%	10.1%	7.4%	9.8%	8.8%	9.2%	9.0%	10.6%	10.1%	46.7%
9-11	6.5%	7.4%	6.7%	6.3%	9.2%	7.5%	9.5%	7.9%	11.6%	9.6%	79.2%
12-14	24.3%	21.7%	17.6%	18.4%	19.0%	17.1%	18.7%	16.5%	22.2%	18.5%	-8.7%
15-17	39.5%	44.1%	41.7%	46.3%	38.2%	43.7%	36.3%	38.2%	30.9%	36.4%	-21.9%
18-20	0.8%	2.5%	5.3%	7.1%	4.3%	5.7%	4.2%	6.3%	5.1%	4.5%	563.7%
Infants (age 0-1)	5.9%	4.9%	4.8%	3.8%	4.9%	5.2%	6.0%	6.5%	7.1%	7.4%	19.0%
Youth (age 13+)	61.2%	64.3%	62.5%	68.6%	58.3%	63.5%	56.0%	57.9%	51.8%	55.3%	-15.5%

### By Race and Ethnicity

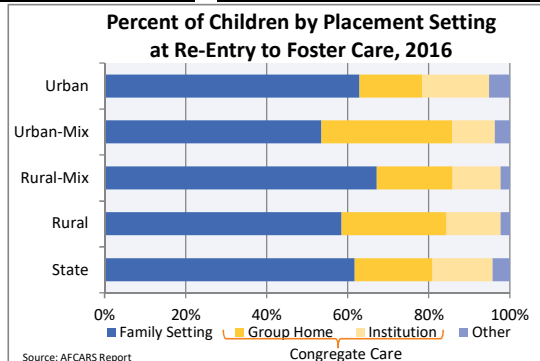
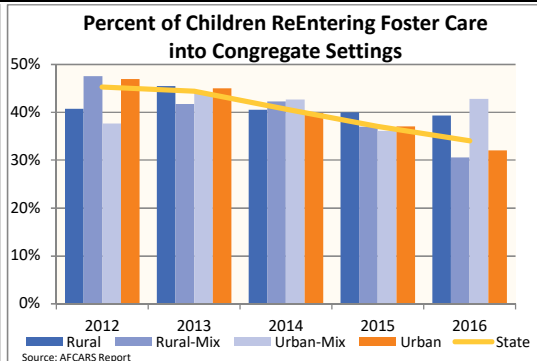
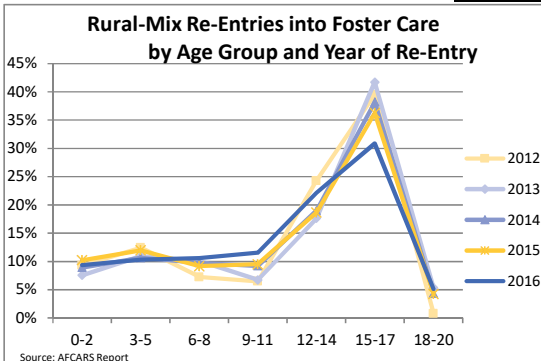
Race/Ethnicity	2012 Rural-Mix	2012 State	2013 Rural-Mix	2013 State	2014 Rural-Mix	2014 State	2015 Rural-Mix	2015 State	2016 Rural-Mix	2016 State	% Change 2012 to 2016
Non-Hispanic White	74.4%	35.7%	74.8%	34.3%	73.3%	35.8%	75.7%	34.7%	69.8%	39.5%	-6.2%
Non-Hispanic Black or African American	16.0%	45.5%	14.8%	44.2%	15.5%	43.3%	12.7%	40.4%	13.2%	40.1%	-17.7%
Non-Hispanic Other Race	0.8%	4.1%	1.4%	6.7%	1.7%	4.1%	1.4%	7.8%	0.3%	3.1%	-58.5%
Non-Hispanic Two or More Races	4.1%	3.3%	4.5%	3.4%	6.6%	4.5%	5.6%	4.9%	8.4%	5.8%	102.2%
Hispanic or Latino	4.7%	11.3%	4.5%	11.4%	2.9%	12.2%	4.6%	12.2%	8.4%	11.6%	79.7%

### By Gender

Gender	2012 Rural-Mix	2012 State	2013 Rural-Mix	2013 State	2014 Rural-Mix	2014 State	2015 Rural-Mix	2015 State	2016 Rural-Mix	2016 State	% Change 2012 to 2016
Male	54.5%	47.6%	53.2%	48.1%	53.2%	50.6%	52.1%	50.5%	55.0%	50.3%	0.8%
Female	45.5%	52.4%	46.8%	51.9%	46.8%	49.4%	47.9%	49.5%	45.0%	49.7%	-1.0%

### By Placement Setting at Re-Entry

Placement Setting	2012 Rural-Mix	2012 State	2013 Rural-Mix	2013 State	2014 Rural-Mix	2014 State	2015 Rural-Mix	2015 State	2016 Rural-Mix	2016 State	% Change 2012 to 2016
<b>Family Setting</b>	<b>48.8%</b>	<b>50.5%</b>	<b>53.2%</b>	<b>48.5%</b>	<b>53.4%</b>	<b>53.7%</b>	<b>58.8%</b>	<b>58.0%</b>	<b>67.2%</b>	<b>61.7%</b>	<b>37.6%</b>
Pre-adoptive Home	0.0%	0.4%	0.0%	0.2%	0.3%	0.2%	0.0%	0.6%	0.0%	0.7%	-
Foster Family Home – Relative	7.5%	16.5%	9.5%	14.9%	11.8%	20.2%	14.1%	24.3%	16.7%	26.3%	123.1%
Foster Family Home – Non-Relative	41.3%	33.5%	43.7%	33.3%	41.4%	33.3%	44.7%	33.1%	50.5%	34.6%	22.1%
<b>Congregate Care Setting</b>	<b>47.5%</b>	<b>45.3%</b>	<b>41.7%</b>	<b>44.4%</b>	<b>42.2%</b>	<b>40.6%</b>	<b>37.0%</b>	<b>37.1%</b>	<b>30.5%</b>	<b>34.0%</b>	<b>-35.8%</b>
Group Home	35.4%	26.0%	31.4%	26.7%	33.3%	24.8%	26.8%	22.3%	18.6%	19.3%	-47.3%
Institution	12.1%	19.2%	10.4%	17.7%	8.9%	15.9%	10.2%	14.8%	11.9%	14.8%	-2.0%
<b>Supervised Independent Living</b>	<b>0.0%</b>	<b>0.8%</b>	<b>0.6%</b>	<b>1.6%</b>	<b>0.6%</b>	<b>1.6%</b>	<b>0.7%</b>	<b>1.7%</b>	<b>1.0%</b>	<b>1.3%</b>	<b>-</b>
Runaway	1.3%	2.5%	0.8%	4.3%	0.9%	3.3%	0.0%	2.4%	0.3%	2.5%	-75.1%
Trial Home Visit	2.3%	1.0%	3.6%	1.2%	2.9%	0.8%	3.5%	0.8%	1.0%	0.5%	-58.5%



## FOSTER CARE - GOALS

All children in foster care have a court-ordered permanency goal, which directs the efforts of the child welfare agency toward a certain family outcome for each child. In addition to the court-ordered 'primary' goal, a 'concurrent' goal is put in place to ensure permanency is achieved if for some reason the primary goal cannot be met. This data provides information on the most recent primary goal for every child served in foster care during the federal fiscal year.

### Indicator

#### Percent of Children by Case Plan Goal

##### Family-Based Permanency Goals

- Reunify With Parent(s) or Principal Caretaker(s)
- Adoption
- Guardianship
- Live with Relative(s)

##### Another Planned Permanent Living Arrangement (APPLA)

- Long Term Foster Care
- Emancipation

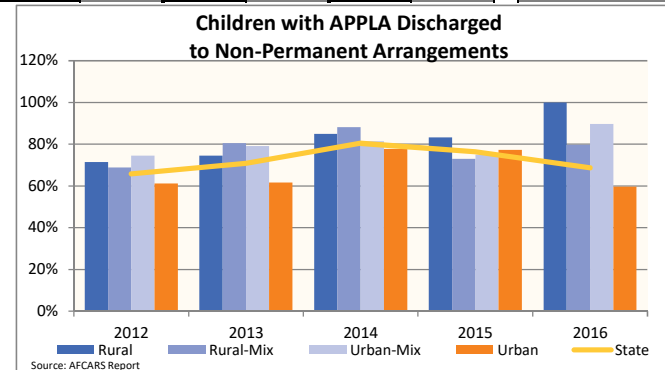
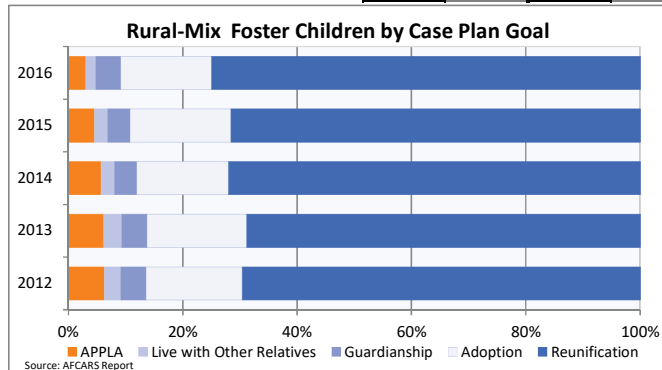
Indicator	2012		2013		2014		2015		2016		Rural-Mix % Change 2012 to 2016	State % Change 2012 to 2016
	Rural-Mix	State	Rural-Mix	State	Rural-Mix	State	Rural-Mix	State	Rural-Mix	State		
<b>Family-Based Permanency Goals</b>	<b>93.7%</b>	<b>90.9%</b>	<b>93.8%</b>	<b>92.8%</b>	<b>94.3%</b>	<b>93.6%</b>	<b>95.5%</b>	<b>95.2%</b>	<b>97.0%</b>	<b>95.0%</b>		
Reunify With Parent(s) or Principal Caretaker(s)	69.6%	69.6%	68.9%	70.5%	72.0%	72.6%	71.6%	73.1%	75.0%	69.8%	7.8%	0.2%
Adoption	16.8%	16.6%	17.4%	16.7%	16.0%	16.1%	17.6%	17.4%	15.8%	19.5%	-6.0%	17.7%
Guardianship	4.4%	3.1%	4.4%	3.6%	3.9%	3.1%	3.9%	3.0%	4.4%	4.3%	-0.9%	39.0%
Live with Relative(s)	2.9%	1.6%	3.1%	2.1%	2.3%	1.8%	2.3%	1.7%	1.8%	1.5%	-37.6%	-5.0%
<b>Another Planned Permanent Living Arrangement (APPLA)</b>	<b>6.3%</b>	<b>9.1%</b>	<b>6.2%</b>	<b>7.2%</b>	<b>5.7%</b>	<b>6.4%</b>	<b>4.5%</b>	<b>4.8%</b>	<b>3.0%</b>	<b>5.0%</b>	<b>-52.4%</b>	<b>-45.7%</b>
Long Term Foster Care	3.2%	3.2%	2.6%	2.1%	2.4%	1.8%	1.7%	1.2%	0.9%	1.0%	-71.8%	-69.6%
Emancipation	3.1%	5.9%	3.5%	5.1%	3.3%	4.6%	2.8%	3.6%	2.1%	4.0%	-32.3%	-32.5%

#### APPLA By Age as % of Age Group Served

Age Group	2012 Rural-Mix	2012 State	2013 Rural-Mix	2013 State	2014 Rural-Mix	2014 State	2015 Rural-Mix	2015 State	2016 Rural-Mix	2016 State	Rural-Mix % Change 2012 to 2016	State % Change 2012 to 2016
0-15	0.9%	1.7%	0.6%	1.1%	0.6%	0.8%	0.4%	0.4%	0.1%	0.2%	-91.5%	-88.5%
16-20	22.4%	28.4%	22.7%	23.6%	22.5%	23.1%	20.3%	19.4%	14.8%	21.6%	-34.1%	-24.0%

#### APPLA By Discharge Reason

Discharge Reason	2012 Rural-Mix	2012 State	2013 Rural-Mix	2013 State	2014 Rural-Mix	2014 State	2015 Rural-Mix	2015 State	2016 Rural-Mix	2016 State	Rural-Mix % Change 2012 to 2016	State % Change 2012 to 2016
<b>Exit to Permanent Arrangements</b>	<b>31.1%</b>	<b>34.1%</b>	<b>19.5%</b>	<b>28.9%</b>	<b>10.5%</b>	<b>19.4%</b>	<b>23.8%</b>	<b>23.0%</b>	<b>20.3%</b>	<b>32.1%</b>	<b>-34.6%</b>	<b>-5.8%</b>
Reunification	25.7%	29.6%	17.1%	22.8%	6.6%	14.5%	15.9%	17.6%	16.9%	27.0%	-34.0%	-8.9%
(number of months until reunification)	39.9	37.2	25.7	27.8	19.4	36.2	10.1	27.5	39.9	30.4	0.0%	-18.1%
Adoption	0.0%	0.1%	0.0%	0.5%	1.3%	0.3%	0.0%	0.2%	0.0%	0.0%	-	-100.0%
(number of months until adoption)	0.0	76.0	0.0	41.1	104.2	149.3	0.0	31.2	0.0	0.0	-	-100.0%
Guardianship	1.4%	1.7%	2.4%	3.4%	1.3%	2.5%	4.8%	1.4%	0.0%	4.2%	-100.0%	141.6%
(number of month until guardianship)	8.5	35.3	35.4	32.0	12.7	27.8	19.5	18.0	0.0	32.0	-100.0%	-9.1%
Live with Other Relatives	4.1%	2.6%	0.0%	2.2%	1.3%	2.1%	3.2%	3.7%	3.4%	0.9%	-16.4%	-64.2%
(number of months until living with relatives)	16.8	25.8	0.0	30.6	17.1	15.9	40.4	37.1	39.8	39.8	137.1%	54.1%
<b>Exit to Non-Permanent Arrangements</b>	<b>68.9%</b>	<b>65.8%</b>	<b>80.5%</b>	<b>70.8%</b>	<b>88.2%</b>	<b>80.4%</b>	<b>73.0%</b>	<b>76.4%</b>	<b>79.7%</b>	<b>68.6%</b>	<b>15.6%</b>	<b>4.4%</b>
Emancipation	66.2%	60.5%	69.5%	64.2%	85.5%	73.0%	69.8%	71.7%	76.3%	62.2%	15.2%	2.8%
(number of months until emancipation)	50.6	40.6	36.6	33.1	29.9	33.5	37.7	34.3	36.0	30.6	-28.9%	-24.6%
Transfer to Another Agency	0.0%	3.6%	6.1%	3.6%	1.3%	5.5%	1.6%	2.7%	3.4%	5.0%	-	38.2%
(number of months until transfer)	0.0	51.5	59.3	46.4	1.1	13.0	28.2	40.7	52.4	27.6	-	-46.3%
Runaway	2.7%	1.6%	4.9%	3.1%	1.3%	1.9%	1.6%	2.0%	0.0%	1.4%	-100.0%	-13.3%
(number of months until running away)	8.6	8.9	24.7	26.5	13.2	16.3	7.4	23.4	0.0	14.1	-100.0%	58.9%
<b>Death of Child</b>	<b>0.0%</b>	<b>0.1%</b>	<b>0.0%</b>	<b>0.3%</b>	<b>1.3%</b>	<b>0.2%</b>	<b>3.2%</b>	<b>0.6%</b>	<b>0.0%</b>	<b>0.2%</b>	<b>-</b>	<b>25.3%</b>
(number of months until death of a child)	0.0	42.8	0.0	92.4	129.8	129.8	18.9	9.0	0.0	143.7	-	235.5%



## FOSTER CARE - EXITS

Data on foster care exits provides information on children who left foster care during the federal fiscal year, where they went when they left and how long their most recent episode of foster care was. A paramount goal of the foster care system is to ensure every child has the lifelong support of a permanent family.

### Indicator

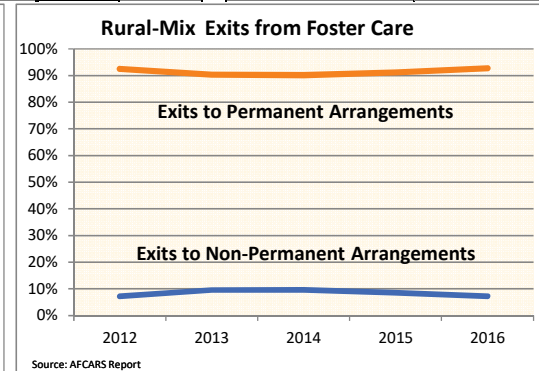
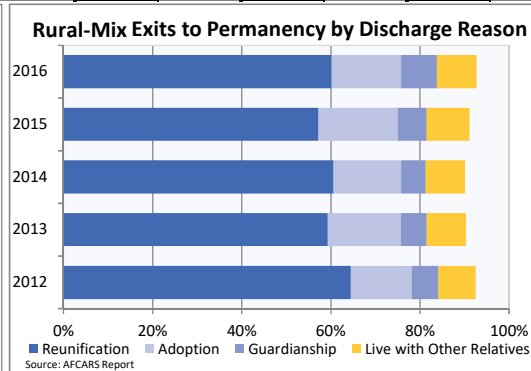
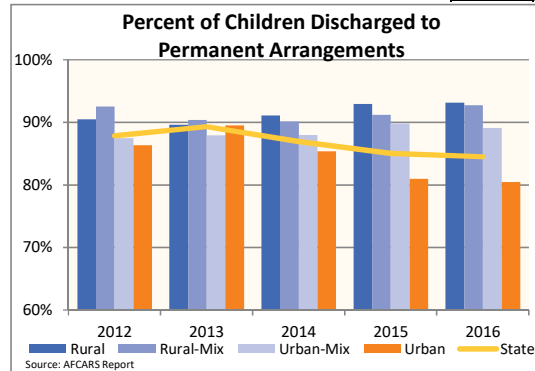
#### Children Exiting Foster Care

Total Children Leaving Foster Care  
 Percent of Children Leaving Foster Care  
 (number of months until leaving)

	2012		2013		2014		2015		2016		Rural-Mix % Change 2012 to 2016	State % Change 2012 to 2016
	Rural-Mix	State	Rural-Mix	State	Rural-Mix	State	Rural-Mix	State	Rural-Mix	State		
Total Children Leaving Foster Care	1,598	10,098	1,360	9,123	1,316	9,769	1,323	9,471	1,405	10,635	-12.1%	5.3%
Percent of Children Leaving Foster Care	53.8%	45.9%	50.1%	42.6%	48.0%	43.4%	47.2%	41.2%	45.0%	43.3%	-16.4%	-5.6%
(number of months until leaving)	9.5	11.9	8.9	11.9	8.0	10.7	9.0	11.4	7.8	11.7	-17.6%	-1.7%

### By Discharge Reason

	2012	2013	2014	2015	2016	2012	2013	2014	2015	2016	Rural-Mix % Change 2012 to 2016	State % Change 2012 to 2016
<b>Exit to Permanent Arrangements</b>	<b>92.5%</b>	<b>87.9%</b>	<b>90.4%</b>	<b>89.3%</b>	<b>90.1%</b>	<b>86.9%</b>	<b>91.2%</b>	<b>85.0%</b>	<b>92.7%</b>	<b>84.5%</b>	<b>0.3%</b>	<b>-3.8%</b>
Reunification	64.5%	60.1%	59.3%	57.3%	60.6%	57.2%	57.2%	54.5%	60.1%	54.5%	-6.7%	-9.2%
Adoption	13.7%	18.0%	16.3%	20.2%	15.1%	18.6%	17.8%	18.7%	15.6%	18.7%	13.7%	3.4%
Guardianship	6.0%	5.4%	5.8%	6.4%	5.5%	6.1%	6.4%	6.5%	8.0%	6.6%	33.9%	22.8%
Live with Other Relatives	8.3%	4.4%	8.9%	5.5%	8.8%	5.0%	9.7%	5.4%	9.0%	4.7%	7.8%	8.3%
(number of months until reunification)	5.1	6.1	5.7	6.0	4.8	5.5	5.3	5.7	4.0	6.7	-20.9%	8.6%
(number of months until adoption)	31.7	27.6	28.5	26.7	31.5	27.4	29.9	28.3	27.5	28.7	-13.4%	4.2%
(number of month until guardianship)	22.0	20.4	20.6	21.2	22.0	20.8	18.4	21.1	17.0	19.4	-22.8%	-4.8%
(number of months until living with relatives)	3.4	2.7	6.5	2.6	3.5	1.0	4.1	3.0	5.5	2.2	63.2%	-21.1%
<b>Exit to Non-Permanent Arrangements</b>	<b>7.2%</b>	<b>12.0%</b>	<b>9.6%</b>	<b>10.5%</b>	<b>9.7%</b>	<b>13.0%</b>	<b>8.6%</b>	<b>14.8%</b>	<b>7.3%</b>	<b>15.4%</b>	<b>0.9%</b>	<b>28.0%</b>
Emancipation	5.9%	8.0%	7.6%	8.1%	7.8%	7.7%	7.0%	7.8%	5.8%	6.8%	-2.0%	-15.8%
Transfer to Another Agency	1.1%	1.6%	1.3%	2.0%	1.7%	4.3%	1.4%	5.8%	1.3%	7.9%	20.4%	399.7%
Runaway	0.3%	2.4%	0.7%	0.5%	0.2%	1.1%	0.2%	1.3%	0.2%	0.7%	-14.7%	-71.0%
Death of Child	<b>0.3%</b>	<b>0.1%</b>	<b>0.1%</b>	<b>0.2%</b>	<b>0.2%</b>	<b>0.1%</b>	<b>0.2%</b>	<b>0.1%</b>	<b>0.0%</b>	<b>0.1%</b>	<b>-100.0%</b>	<b>-5.0%</b>
(number of months until emancipation)	40.6	37.4	26.4	31.4	23.4	29.6	27.2	28.1	25.8	23.4	-36.5%	-37.3%
(number of months until transfer)	1.9	5.3	31.4	6.0	4.9	5.0	18.4	6.7	14.8	7.6	696.0%	44.2%
(number of months until running away)	26.1	4.8	19.7	14.9	39.9	13.2	3.7	15.5	6.6	11.2	-74.6%	132.5%
(number of months until death of a child)	7.0	4.7	11.5	11.9	45.6	30.9	42.2	4.9	0.0	13.2	-100.0%	180.8%



## FOSTER CARE - REMAINING IN CARE

Data on children remaining in foster care provides information on children who did not leave foster care during the year but are still in foster care on the last day of the federal fiscal year. This data includes all children in foster care on September 30. Some of these children may have just entered foster care days prior to the end of the fiscal year and others may have been in foster care for many years.

### Indicator

#### Children Remaining in Foster Care

Children in Foster Care on Last Day  
(number of months children have been in care)

	2012		2013		2014		2015		2016		Rural-Mix % Change 2012 to 2016	State % Change 2012 to 2016
	Rural-Mix	State	Rural-Mix	State	Rural-Mix	State	Rural-Mix	State	Rural-Mix	State		
Children in Foster Care on Last Day	1,542	13,566	1,498	13,697	1,568	14,162	1,617	14,859	1,842	15,382	19.5%	13.4%
(number of months children have been in care)	11.4	13.0	12.3	13.1	12.0	12.6	10.5	12.5	10.2	13.2	-10.3%	1.8%

#### By Age

Age Group	2012 Rural-Mix	2012 State	2013 Rural-Mix	2013 State	2014 Rural-Mix	2014 State	2015 Rural-Mix	2015 State	2016 Rural-Mix	2016 State	% Change 2012 to 2016	% Change 2012 to 2016
0-2	21.1%	19.5%	22.8%	19.9%	21.7%	20.0%	23.4%	21.0%	26.7%	21.3%	26.5%	9.1%
3-5	16.5%	15.3%	16.6%	15.6%	16.8%	16.7%	15.8%	16.7%	16.6%	17.0%	0.9%	11.6%
6-8	11.5%	10.9%	13.1%	11.6%	13.3%	12.4%	11.6%	12.9%	11.7%	13.2%	1.7%	21.8%
9-11	8.9%	9.2%	8.0%	9.1%	11.0%	9.6%	10.6%	10.7%	10.2%	11.6%	14.0%	26.9%
12-14	12.6%	12.4%	11.3%	11.7%	11.2%	11.5%	13.2%	11.7%	11.5%	12.0%	-9.4%	-3.3%
15-17	24.0%	23.4%	23.1%	22.6%	21.1%	21.1%	20.6%	20.2%	19.9%	19.6%	-17.0%	-16.5%
18-20	5.4%	9.4%	5.0%	9.5%	4.9%	8.4%	4.7%	6.8%	3.5%	5.3%	-35.4%	-43.7%
Infants (age 0-1)	14.7%	13.2%	14.4%	12.7%	14.7%	13.2%	16.9%	13.9%	18.4%	13.8%	25.6%	4.4%
Youth (age 13+)	38.7%	41.9%	36.6%	40.7%	34.2%	37.8%	34.4%	35.2%	32.1%	33.5%	-16.8%	-20.2%

#### By Race and Ethnicity

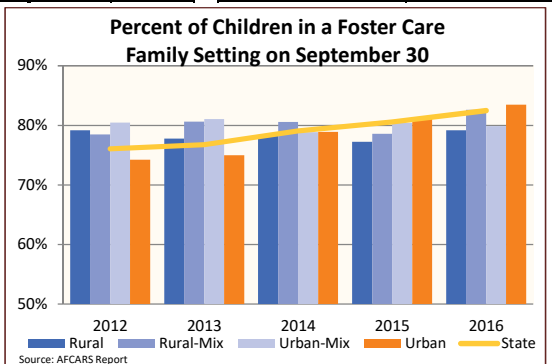
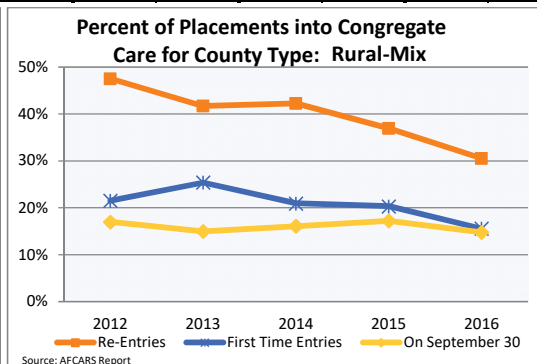
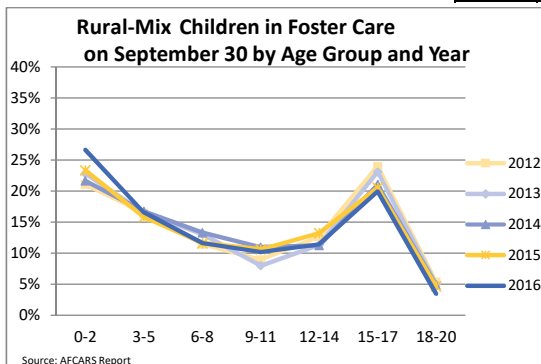
Race/Ethnicity	2012 Rural-Mix	2012 State	2013 Rural-Mix	2013 State	2014 Rural-Mix	2014 State	2015 Rural-Mix	2015 State	2016 Rural-Mix	2016 State	% Change 2012 to 2016	% Change 2012 to 2016
Non-Hispanic White	75.7%	40.9%	74.8%	38.7%	74.9%	40.1%	75.8%	37.9%	75.1%	41.0%	-0.9%	0.2%
Non-Hispanic Black or African American	14.2%	37.5%	13.9%	37.1%	13.0%	38.3%	11.2%	36.9%	9.9%	37.0%	-30.4%	-1.4%
Non-Hispanic Other Race	1.4%	6.0%	1.5%	7.8%	1.2%	3.9%	1.2%	6.0%	0.8%	2.9%	-44.2%	-51.7%
Non-Hispanic Two or More Races	2.8%	3.3%	4.1%	3.7%	4.6%	4.7%	6.3%	4.9%	7.6%	5.5%	172.6%	68.3%
Hispanic or Latino	5.9%	12.2%	5.7%	12.7%	6.3%	13.0%	5.5%	14.3%	6.7%	13.6%	13.2%	10.8%

#### By Gender

Gender	2012 Rural-Mix	2012 State	2013 Rural-Mix	2013 State	2014 Rural-Mix	2014 State	2015 Rural-Mix	2015 State	2016 Rural-Mix	2016 State	% Change 2012 to 2016	% Change 2012 to 2016
Male	53.1%	50.8%	52.7%	50.7%	54.0%	50.9%	54.1%	51.3%	53.9%	51.2%	1.4%	0.7%
Female	46.9%	49.2%	47.3%	49.3%	46.0%	49.1%	45.9%	48.7%	46.1%	48.8%	-1.6%	-0.7%

#### By Latest Placement Setting

Placement Setting	2012 Rural-Mix	2012 State	2013 Rural-Mix	2013 State	2014 Rural-Mix	2014 State	2015 Rural-Mix	2015 State	2016 Rural-Mix	2016 State	% Change 2012 to 2016	% Change 2012 to 2016
<b>Family Setting</b>	<b>78.5%</b>	<b>76.1%</b>	<b>80.6%</b>	<b>76.8%</b>	<b>80.5%</b>	<b>79.0%</b>	<b>78.6%</b>	<b>80.6%</b>	<b>82.6%</b>	<b>82.5%</b>	<b>5.3%</b>	<b>8.4%</b>
Pre-adoptive Home	1.4%	3.0%	1.5%	3.2%	1.9%	3.9%	1.3%	3.2%	1.9%	5.3%	33.2%	76.6%
Foster Family Home – Relative	19.1%	25.2%	19.4%	25.7%	22.1%	30.0%	23.9%	32.8%	25.2%	35.1%	32.1%	39.3%
Foster Family Home – Non-Relative	58.0%	47.9%	59.7%	47.9%	56.6%	45.1%	53.4%	44.5%	55.5%	42.1%	-4.2%	-12.1%
<b>Congregate Care Setting</b>	<b>17.0%</b>	<b>19.2%</b>	<b>15.0%</b>	<b>18.7%</b>	<b>16.1%</b>	<b>17.3%</b>	<b>17.3%</b>	<b>16.0%</b>	<b>14.8%</b>	<b>14.7%</b>	<b>-13.1%</b>	<b>-23.4%</b>
Group Home	11.0%	11.0%	9.2%	10.8%	9.8%	10.6%	10.3%	9.0%	8.7%	8.4%	-21.2%	-23.8%
Institution	6.0%	8.2%	5.7%	7.8%	6.3%	6.7%	7.0%	7.0%	6.1%	6.3%	1.9%	-22.9%
<b>Supervised Independent Living</b>	<b>0.5%</b>	<b>1.9%</b>	<b>0.8%</b>	<b>2.1%</b>	<b>0.4%</b>	<b>1.7%</b>	<b>0.8%</b>	<b>1.4%</b>	<b>0.6%</b>	<b>1.3%</b>	<b>15.1%</b>	<b>-27.1%</b>
Runaway	0.5%	1.8%	0.4%	1.4%	0.3%	1.1%	0.1%	1.1%	0.1%	0.7%	-76.1%	-57.8%
Trial Home Visit	3.6%	1.1%	3.2%	1.0%	2.7%	0.8%	3.3%	1.0%	1.9%	0.7%	-46.7%	-36.3%



## FOSTER CARE - STABILITY

Every time a child moves, the trauma caused by separation and lack of continuity grows. A child who faces multiple placements struggles to build and maintain healthy relationships and confront academic challenges due to school changes.

### Indicator

#### Foster Care Placement Stability

Children who were in foster care for 12 to 23 months and had three or more placement settings.

2012		2013		2014		2015		2016		Rural-Mix % Change 2012 to 2016	State % Change 2012 to 2016
Rural-Mix	State	Rural-Mix	State	Rural-Mix	State	Rural-Mix	State	Rural-Mix	State		
37.2%	36.9%	38.4%	34.1%	37.5%	32.7%	35.6%	32.8%	30.2%	33.6%	-18.8%	-9.0%

## FOSTER CARE - TIMELY REUNIFICATION

A child's separation from his or her parents or relatives is traumatic for all involved. Minimizing the time a child spends in foster care without compromising safety is key to healthy child development.

### Indicator

#### Timely Reunification with Parents or Relatives

Children who entered foster care for the first time who were reunified with their parents or discharged to relatives within the next 12 months.

2012		2013		2014		2015		2016		Rural-Mix % Change 2012 to 2016	State % Change 2012 to 2016
Rural-Mix	State	Rural-Mix	State	Rural-Mix	State	Rural-Mix	State	Rural-Mix	State		
53.7%	44.6%	50.9%	41.3%	45.9%	39.7%	49.5%	39.0%	42.6%	36.0%	-20.7%	-19.3%

## FOSTER CARE - FAILED REUNIFICATION

A child re-entering foster care following a return to his or her family signals a breakdown in the family and a potential failure on the part of the child welfare system to appropriately address family needs.

### Indicator

#### Failed 1-Year Reunification (Re-entry)

Children who re-entered foster care in fewer than 12 months following reunification with parents or relatives.

2012		2013		2014		2015		2016		Rural-Mix % Change 2012 to 2016	State % Change 2012 to 2016
Rural-Mix	State	Rural-Mix	State	Rural-Mix	State	Rural-Mix	State	Rural-Mix	State		
23.1%	26.3%	20.4%	26.4%	21.0%	26.9%	17.7%	24.1%	20.0%	24.8%	-13.5%	-5.7%



PPC is part of a network coordinated and supported by the Annie E. Casey Foundation

We gratefully acknowledge the support of The Annie E. Casey Foundation's KIDS COUNT Project, The Heinz Endowments, Highmark, and PNC Financial Services Group.



Pennsylvania Partnerships for Children  
116 Pine Street, Suite 430  
Harrisburg, PA • 17101-1244  
papartnerships.org  
717.236.5680 • 800.257.2030