

CHILD ABUSE AND NEGLECT

Child maltreatment is a serious problem that has grave and costly consequences for the child, his or her family and the community at-large. A child who has experienced abuse and neglect is more likely to have social, emotional and physical health problems and perform poorly in school.

Indicator

Child Abuse Reports

Reported incidents of suspected child abuse through the ChildLine and Abuse Registry. Does not include General Protective Services reports, which include less severe general neglect reports. (Number and rate per 1,000 children age 0-17)

2010		2011		2012		2013		2014		Rural-Mix % Change 2010 to 2014	State % Change 2010 to 2014
Rural-Mix	State	Rural-Mix	State	Rural-Mix	State	Rural-Mix	State	Rural-Mix	State		
3,733	24,615	3,700	24,378	4,170	26,664	4,238	26,944	4,641	29,273	24.3%	18.9%
9.2	8.8	9.1	8.7	10.2	9.5	10.4	9.6	11.4	10.5		

Child Abuse Substantiations

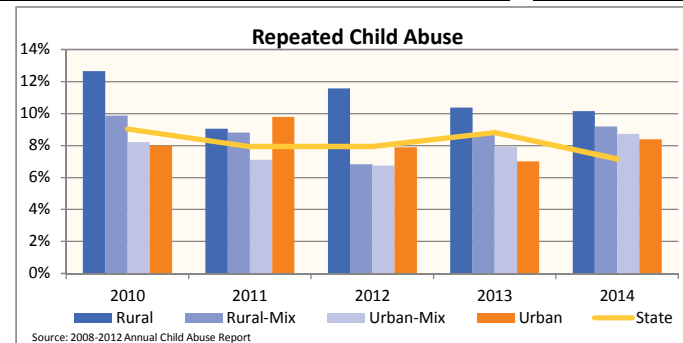
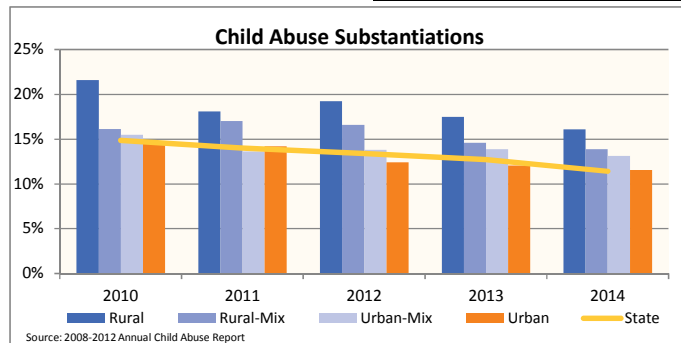
Founded or indicated reports of child abuse. Does not include the number of children determined to need General Protective Services.

17.0%	14.9%	16.6%	14.0%	14.6%	13.4%	13.9%	12.7%	11.5%	11.4%	-32.5%	-23.2%
-------	-------	-------	-------	-------	-------	-------	-------	-------	-------	--------	--------

Repeated Child Abuse

Children with another substantiated incident of abuse following the first reported incident. (Data may be overstated.)

8.8%	9.0%	6.8%	7.9%	8.7%	7.9%	9.2%	8.8%	7.7%	7.2%	-12.8%	-20.7%
1 in 11	1 in 11	1 in 15	1 in 13	1 in 11	1 in 13	1 in 11	1 in 11	1 in 13	1 in 14		



IN-HOME SERVICES

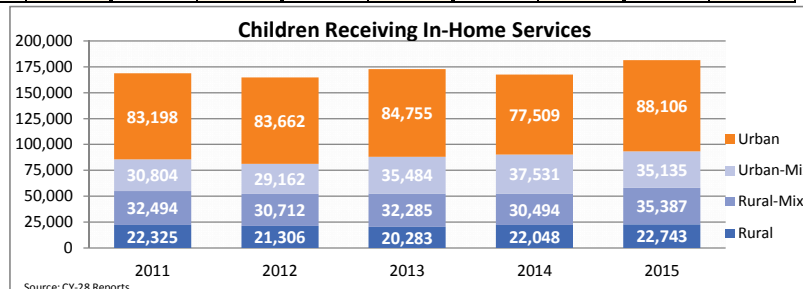
In-home services are designed to strengthen families by addressing the root causes of abuse and neglect. The provision of in-home services helps a child to remain safely in his or her home or return home.

Indicator

Unduplicated Number of Children Served

Children who received services provided to both parents and children to address concerns related to child safety and well-being to enable the children to remain safely in their own home. This includes children whose families were screened-in and/or accepted for services.

2011		2012		2013		2014		2015		Rural-Mix % Change 2011 to 2015	State % Change 2011 to 2015
Rural-Mix	State	Rural-Mix	State	Rural-Mix	State	Rural-Mix	State	Rural-Mix	State		
32,494	168,821	30,712	164,842	32,285	172,807	30,494	167,582	35,387	181,371	8.9%	7.4%



FOSTER CARE - SERVED

Foster care is meant to be a temporary intervention to assure the safety and well-being of a child. A child who spends long periods in foster care is more likely than other children to drop out of school, have mental health challenges, and experience unemployment and/or homeless as an adult. The following shows the past five years of data regarding children served in foster care during each federal fiscal year.

Indicator

Unduplicated Number of Children Served

All Children in Foster Care During the Year
(Rate per 1,000 children age 0-20)

Indicator	2011		2012		2013		2014		2015		Rural-Mix % Change 2011 to 2015	State % Change 2011 to 2015
	Rural-Mix	State	Rural-Mix	State	Rural-Mix	State	Rural-Mix	State	Rural-Mix	State		
Unduplicated Number of Children Served	3,002	22,750	2,969	22,000	2,713	21,416	2,743	22,510	2,805	22,980	-6.6%	1.0%
	6.2	6.7	6.1	6.5	5.6	6.4	5.7	6.7	5.8	6.8		

By Age

Age Group	2011 Rural-Mix	2011 State	2012 Rural-Mix	2012 State	2013 Rural-Mix	2013 State	2014 Rural-Mix	2014 State	2015 Rural-Mix	2015 State	% Change 2011 to 2015
0-2	17.9%	18.2%	19.3%	18.9%	20.2%	19.2%	20.1%	19.4%	21.1%	19.9%	18.2%
3-5	16.0%	15.1%	16.2%	15.6%	15.6%	15.9%	16.6%	16.8%	16.8%	17.1%	4.6%
6-8	10.8%	10.5%	11.1%	10.8%	12.2%	11.5%	12.7%	12.3%	12.5%	12.9%	15.9%
9-11	8.8%	8.9%	8.4%	8.9%	8.2%	8.9%	9.8%	9.5%	9.7%	10.0%	10.3%
12-14	13.2%	12.1%	13.2%	12.0%	11.6%	11.4%	11.4%	10.9%	12.2%	11.4%	-7.1%
15-17	27.0%	24.8%	24.7%	23.3%	24.5%	22.3%	22.7%	21.4%	21.6%	20.4%	-20.3%
18-20	6.3%	10.4%	7.0%	10.5%	7.7%	10.7%	6.8%	9.8%	6.1%	8.3%	-3.1%
Infants (age 0-1)	11.2%	11.7%	13.3%	12.2%	12.6%	11.9%	12.8%	12.5%	14.4%	12.8%	28.7%
Youth (age 13+)	43.5%	44.2%	41.7%	42.7%	41.2%	41.5%	38.0%	38.9%	36.3%	36.7%	-16.7%

By Race and Ethnicity

Race/Ethnicity	2011 Rural-Mix	2011 State	2012 Rural-Mix	2012 State	2013 Rural-Mix	2013 State	2014 Rural-Mix	2014 State	2015 Rural-Mix	2015 State	% Change 2011 to 2015
Non-Hispanic White	74.4%	40.8%	75.2%	43.3%	75.5%	41.8%	74.3%	42.3%	73.5%	40.9%	-1.2%
Non-Hispanic Black or African American	16.0%	30.8%	15.3%	34.9%	13.5%	34.8%	12.9%	35.2%	12.2%	34.6%	-23.7%
Non-Hispanic Other Race	1.3%	14.9%	1.0%	6.5%	1.3%	7.0%	1.4%	4.4%	1.4%	5.9%	1.7%
Non-Hispanic Two or More Races	1.6%	1.9%	2.4%	3.2%	3.8%	3.9%	4.7%	4.9%	6.7%	5.3%	312.8%
Hispanic or Latino	6.6%	11.6%	6.1%	12.0%	5.9%	12.5%	6.7%	13.1%	6.1%	13.4%	-7.0%

By Gender

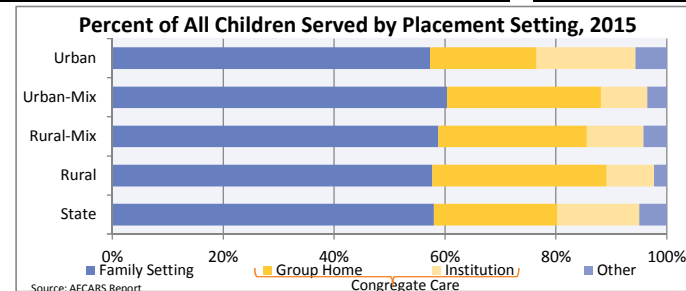
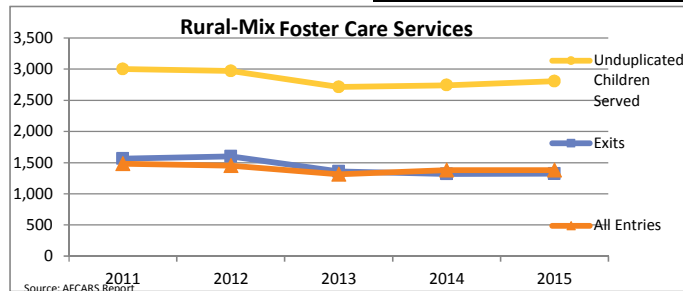
Gender	2011 Rural-Mix	2011 State	2012 Rural-Mix	2012 State	2013 Rural-Mix	2013 State	2014 Rural-Mix	2014 State	2015 Rural-Mix	2015 State	% Change 2011 to 2015
Male	50.4%	50.7%	51.1%	50.5%	53.0%	50.8%	52.8%	50.8%	53.7%	51.0%	6.5%
Female	49.6%	49.3%	48.9%	49.5%	47.0%	49.2%	47.2%	49.2%	46.3%	49.0%	-6.6%

By First Placement Setting

Placement Setting	2011 Rural-Mix	2011 State	2012 Rural-Mix	2012 State	2013 Rural-Mix	2013 State	2014 Rural-Mix	2014 State	2015 Rural-Mix	2015 State	% Change 2011 to 2015
Family Setting	68.9%	72.0%	71.7%	72.8%	71.5%	73.4%	73.8%	75.8%	73.6%	77.1%	6.8%
Pre-adoptive Home	4.3%	3.9%	3.6%	3.2%	2.3%	3.4%	2.4%	3.5%	1.9%	3.1%	-55.7%
Foster Family Home – Relative	14.1%	23.5%	16.9%	24.4%	17.4%	24.8%	19.2%	29.6%	21.4%	31.5%	51.8%
Foster Family Home – Non-Relative	50.6%	44.5%	51.3%	45.2%	51.8%	45.2%	52.2%	42.7%	50.3%	42.5%	-0.5%
Congregate Care	22.0%	20.6%	19.9%	20.6%	19.3%	19.6%	18.7%	18.3%	17.9%	17.1%	-18.9%
Group Home	15.5%	11.7%	13.9%	12.5%	13.5%	12.1%	12.6%	11.6%	11.2%	10.5%	-27.9%
Institution	6.5%	8.9%	6.0%	8.0%	5.9%	7.5%	6.1%	6.8%	6.7%	6.6%	2.6%
Supervised Independent Living	0.6%	2.2%	0.6%	1.8%	0.8%	2.0%	0.7%	1.9%	1.0%	1.7%	52.1%
Runaway	0.8%	2.0%	0.8%	1.4%	0.8%	1.8%	0.7%	1.2%	0.4%	1.3%	-50.9%
Trial Home Visit	7.6%	3.1%	6.9%	3.4%	7.6%	3.2%	6.1%	2.8%	7.2%	2.9%	-8.3%

Children Entering Foster Care

All Entries into Foster Care During the Year	2011	2012	2013	2014	2015	% Change 2011 to 2015
Rural-Mix	1,480	9,849	1,451	9,793	1,314	-6.7%
State	9,306	1,379	10,364	1,381	10,387	5.5%



FOSTER CARE - FIRST TIME ENTRIES

Data on first time entries provides information on children who have just begun their foster care experience during the past federal fiscal year. How the child welfare system is serving them may say something about current system practice and decision making.

Indicator

Children Entering for the First Time

First Time Entries During the Year
(Rate per 1,000 children age 0-20)
First Time Entries as Percent of All Entries

Indicator	2011		2012		2013		2014		2015		Rural-Mix % Change 2011 to 2015	State % Change 2011 to 2015
	Rural-Mix	State	Rural-Mix	State	Rural-Mix	State	Rural-Mix	State	Rural-Mix	State		
First Time Entries During the Year (Rate per 1,000 children age 0-20)	1,091	6,979	1,064	7,018	957	6,698	1,031	7,592	1,097	7,843	0.5%	12.4%
First Time Entries as Percent of All Entries	73.7%	70.9%	73.3%	71.7%	72.8%	72.0%	74.8%	73.3%	79.4%	75.5%	7.8%	6.6%

By Age

Age Group	2011 Rural-Mix	2011 State	2012 Rural-Mix	2012 State	2013 Rural-Mix	2013 State	2014 Rural-Mix	2014 State	2015 Rural-Mix	2015 State	Rural-Mix % Change 2011 to 2015	State % Change 2011 to 2015
0-2	27.2%	31.7%	31.1%	32.2%	31.1%	32.8%	29.0%	32.7%	31.3%	32.7%	14.9%	3.2%
3-5	13.9%	14.1%	13.9%	14.2%	13.7%	14.6%	14.9%	15.7%	15.9%	14.6%	13.8%	3.5%
6-8	8.6%	9.3%	9.1%	10.1%	9.3%	10.0%	11.0%	11.5%	10.0%	11.9%	16.4%	27.9%
9-11	6.2%	7.9%	8.4%	8.6%	8.2%	8.2%	10.6%	9.2%	7.9%	9.8%	27.2%	24.7%
12-14	18.1%	14.7%	16.1%	14.4%	13.6%	13.5%	15.1%	12.7%	15.9%	13.4%	-12.2%	-9.1%
15-17	25.9%	22.2%	21.4%	20.4%	24.1%	20.8%	19.3%	18.0%	19.0%	17.4%	-26.9%	-21.5%
18-20	0.0%	0.1%	0.0%	0.0%	0.0%	0.1%	0.1%	0.1%	0.1%	0.1%	-	100.2%
Infants (age 0-1)	21.5%	25.7%	25.8%	26.2%	24.2%	26.4%	23.6%	26.3%	26.1%	26.2%	21.0%	1.9%
Youth (age 13+)	40.1%	33.8%	33.1%	31.2%	35.1%	31.4%	31.1%	27.6%	31.4%	27.5%	-21.7%	-18.5%

By Race and Ethnicity

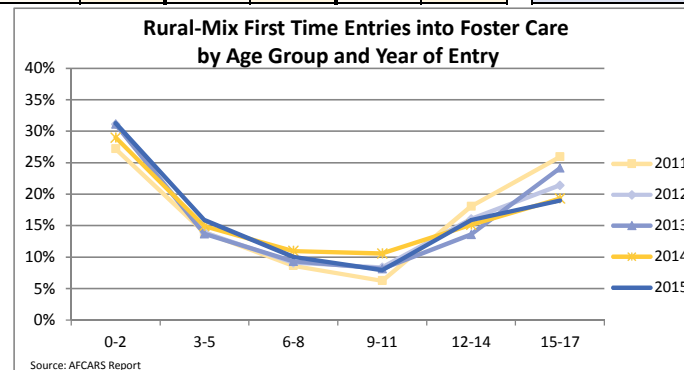
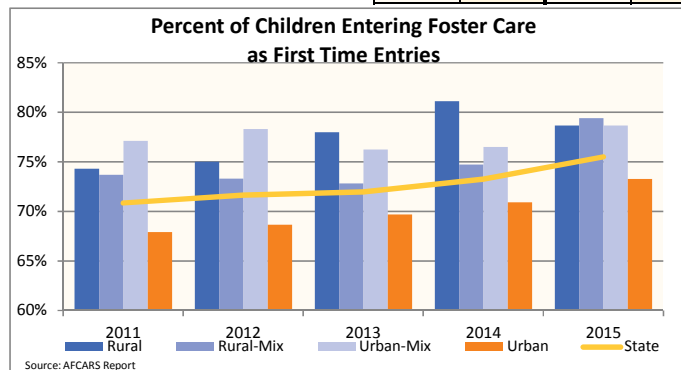
Race/Ethnicity	2011 Rural-Mix	2011 State	2012 Rural-Mix	2012 State	2013 Rural-Mix	2013 State	2014 Rural-Mix	2014 State	2015 Rural-Mix	2015 State	Rural-Mix % Change 2011 to 2015	State % Change 2011 to 2015
Non-Hispanic White	73.8%	46.1%	75.4%	49.3%	75.1%	45.7%	73.9%	46.9%	72.8%	42.7%	-1.3%	-7.4%
Non-Hispanic Black or African American	16.5%	27.4%	16.1%	31.9%	13.2%	29.6%	11.4%	29.2%	11.7%	29.1%	-29.3%	6.1%
Non-Hispanic Other Race	1.3%	12.2%	1.2%	4.1%	1.8%	7.9%	1.6%	5.1%	1.5%	8.7%	13.7%	-28.6%
Non-Hispanic Two or More Races	1.5%	1.9%	1.9%	3.0%	3.9%	3.9%	4.4%	4.9%	8.0%	5.6%	447.0%	185.3%
Hispanic or Latino	7.0%	12.4%	5.5%	11.7%	6.1%	13.0%	8.6%	13.9%	6.0%	14.0%	-13.6%	13.0%

By Gender

Gender	2011 Rural-Mix	2011 State	2012 Rural-Mix	2012 State	2013 Rural-Mix	2013 State	2014 Rural-Mix	2014 State	2015 Rural-Mix	2015 State	Rural-Mix % Change 2011 to 2015	State % Change 2011 to 2015
Male	49.1%	49.6%	51.8%	49.9%	52.4%	50.1%	52.6%	50.9%	53.5%	50.9%	8.9%	2.5%
Female	50.9%	50.4%	48.2%	50.1%	47.6%	49.9%	47.4%	49.1%	46.5%	49.1%	-8.6%	-2.4%

By First Placement Setting

Placement Setting	2011 Rural-Mix	2011 State	2012 Rural-Mix	2012 State	2013 Rural-Mix	2013 State	2014 Rural-Mix	2014 State	2015 Rural-Mix	2015 State	Rural-Mix % Change 2011 to 2015	State % Change 2011 to 2015
Family Setting	68.9%	74.8%	74.8%	76.4%	70.8%	76.7%	76.9%	80.7%	75.7%	80.9%	9.8%	8.2%
Pre-adoptive Home	0.0%	0.2%	0.0%	0.2%	0.2%	0.3%	0.1%	0.2%	0.1%	0.1%	-	-41.9%
Foster Family Home – Relative	16.0%	25.0%	17.2%	25.8%	16.6%	27.2%	20.6%	33.1%	22.6%	33.6%	40.9%	34.1%
Foster Family Home – Non-Relative	52.9%	49.5%	57.6%	50.4%	54.0%	49.3%	56.3%	47.5%	53.0%	47.2%	0.1%	-4.7%
Congregate Care	27.9%	22.4%	21.5%	21.1%	25.4%	21.0%	21.0%	17.5%	20.3%	17.0%	-27.0%	-23.9%
Group Home	22.9%	14.8%	16.4%	14.7%	20.0%	15.0%	15.3%	12.1%	13.3%	10.7%	-41.9%	-27.4%
Institution	4.9%	7.6%	5.1%	6.4%	5.4%	6.0%	5.6%	5.4%	7.0%	6.3%	41.8%	-17.0%
Supervised Independent Living	0.1%	0.3%	0.0%	0.2%	0.2%	0.1%	0.0%	0.1%	0.1%	0.2%	-0.5%	-46.6%
Runaway	0.0%	0.7%	0.3%	0.4%	0.5%	0.6%	0.3%	0.4%	0.0%	0.4%	-	-35.2%
Trial Home Visit	3.1%	1.9%	3.4%	1.9%	3.0%	1.5%	1.8%	1.2%	3.9%	1.5%	25.8%	-20.8%



FOSTER CARE - RE-ENTRIES

Data on re-entries provides information on children who come back into foster care because of new or continuing challenges at home. Some children experience numerous foster care episodes or cycle in an out of the system. Others can experience large spans of time between foster care episodes, which is why the age of children who typically re-enter is older.

Indicator

Children Re-Entering Foster Care

Re-Entries During the Year
Re-Entries as Percent of All Entries

2011		2012		2013		2014		2015		Rural-Mix % Change 2011 to 2015	State % Change 2011 to 2015
Rural-Mix	State	Rural-Mix	State	Rural-Mix	State	Rural-Mix	State	Rural-Mix	State		
389	2,870	387	2,775	357	2,608	348	2,772	284	2,544	-27.0%	-11.4%
26.3%	29.1%	26.7%	28.3%	27.2%	28.0%	25.2%	26.7%	20.6%	24.5%	-21.8%	-16.0%

By Age

Age Group	2011 Rural-Mix	2011 State	2012 Rural-Mix	2012 State	2013 Rural-Mix	2013 State	2014 Rural-Mix	2014 State	2015 Rural-Mix	2015 State	% Change 2011 to 2015	% Change 2011 to 2015
0-2	10.5%	8.8%	9.3%	8.5%	7.6%	6.6%	8.9%	8.2%	10.2%	10.8%	-3.1%	22.2%
3-5	9.8%	7.9%	12.4%	9.5%	10.9%	7.8%	10.6%	9.2%	12.0%	11.4%	22.6%	43.0%
6-8	9.8%	7.5%	7.2%	6.5%	10.1%	7.4%	9.8%	8.8%	9.2%	9.0%	-6.3%	19.6%
9-11	6.4%	6.5%	6.5%	7.4%	6.7%	6.3%	9.2%	7.5%	9.5%	7.9%	47.9%	22.5%
12-14	19.5%	19.7%	24.3%	21.7%	17.6%	18.4%	19.0%	17.1%	18.7%	16.5%	-4.5%	-16.3%
15-17	43.4%	46.9%	39.5%	44.1%	41.7%	46.3%	38.2%	43.7%	36.3%	38.2%	-16.5%	-18.6%
18-20	0.5%	2.6%	0.8%	2.5%	5.3%	7.1%	4.3%	5.7%	4.2%	6.3%	721.8%	137.5%
Infants (age 0-1)	5.4%	5.6%	5.9%	4.9%	4.8%	3.8%	4.9%	5.2%	6.0%	6.5%	10.9%	15.6%
Youth (age 13+)	60.9%	65.2%	61.2%	64.3%	62.5%	68.6%	58.3%	63.5%	56.0%	57.9%	-8.1%	-11.1%

By Race and Ethnicity

Race/Ethnicity	2011 Rural-Mix	2011 State	2012 Rural-Mix	2012 State	2013 Rural-Mix	2013 State	2014 Rural-Mix	2014 State	2015 Rural-Mix	2015 State	% Change 2011 to 2015	% Change 2011 to 2015
Non-Hispanic White	76.1%	34.5%	74.4%	35.7%	74.8%	34.3%	73.3%	35.8%	75.7%	34.7%	-0.5%	0.5%
Non-Hispanic Black or African American	17.2%	34.9%	16.0%	45.5%	14.8%	44.2%	15.5%	43.3%	12.7%	40.4%	-26.4%	15.7%
Non-Hispanic Other Race	0.3%	18.5%	0.8%	4.1%	1.4%	6.7%	1.7%	4.1%	1.4%	7.8%	447.9%	-57.9%
Non-Hispanic Two or More Races	1.3%	1.4%	4.1%	3.3%	4.5%	3.4%	6.6%	4.5%	5.6%	4.9%	338.3%	261.6%
Hispanic or Latino	5.1%	10.7%	4.7%	11.3%	4.5%	11.4%	2.9%	12.2%	4.6%	12.2%	-11.0%	13.5%

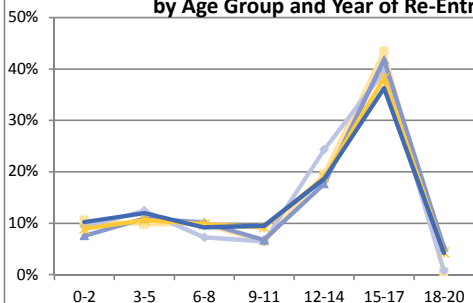
By Gender

Gender	2011 Rural-Mix	2011 State	2012 Rural-Mix	2012 State	2013 Rural-Mix	2013 State	2014 Rural-Mix	2014 State	2015 Rural-Mix	2015 State	% Change 2011 to 2015	% Change 2011 to 2015
Male	51.4%	47.0%	54.5%	47.6%	53.2%	48.1%	53.2%	50.6%	52.1%	50.5%	1.4%	7.4%
Female	48.6%	53.0%	45.5%	52.4%	46.8%	51.9%	46.8%	49.4%	47.9%	49.5%	-1.4%	-6.5%

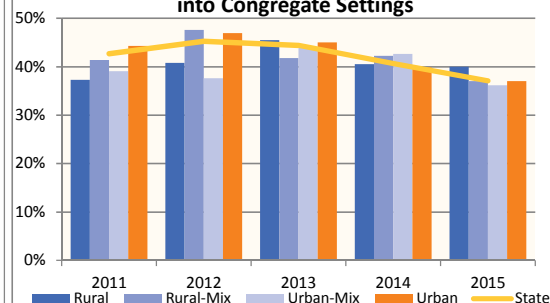
By Placement Setting at Re-Entry

Placement Setting	2011 Rural-Mix	2011 State	2012 Rural-Mix	2012 State	2013 Rural-Mix	2013 State	2014 Rural-Mix	2014 State	2015 Rural-Mix	2015 State	% Change 2011 to 2015	% Change 2011 to 2015
Family Setting	55.3%	50.9%	48.8%	50.5%	53.2%	48.5%	53.4%	53.7%	58.8%	58.0%	6.4%	14.0%
Pre-adoptive Home	0.3%	0.3%	0.0%	0.4%	0.0%	0.2%	0.3%	0.2%	0.0%	0.6%	-100.0%	61.0%
Foster Family Home – Relative	8.7%	17.2%	7.5%	16.5%	9.5%	14.9%	11.8%	20.2%	14.1%	24.3%	61.1%	41.6%
Foster Family Home – Non-Relative	46.3%	33.3%	41.3%	33.5%	43.7%	33.3%	41.4%	33.3%	44.7%	33.1%	-3.4%	-0.7%
Congregate Care	41.4%	42.7%	47.5%	45.3%	41.7%	44.4%	42.2%	40.6%	37.0%	37.1%	-10.7%	-13.1%
Group Home	31.6%	23.8%	35.4%	26.0%	31.4%	26.7%	33.3%	24.8%	26.8%	22.3%	-15.4%	-6.5%
Institution	9.8%	18.9%	12.1%	19.2%	10.4%	17.7%	8.9%	15.9%	10.2%	14.8%	4.5%	-21.5%
Supervised Independent Living	1.3%	1.6%	0.0%	0.8%	0.6%	1.6%	0.6%	1.6%	0.7%	1.7%	-45.2%	9.9%
Runaway	0.3%	4.2%	1.3%	2.5%	0.8%	4.3%	0.9%	3.3%	0.0%	2.4%	-100.0%	-43.9%
Trial Home Visit	1.8%	0.7%	2.3%	1.0%	3.6%	1.2%	2.9%	0.8%	3.5%	0.8%	95.7%	27.1%

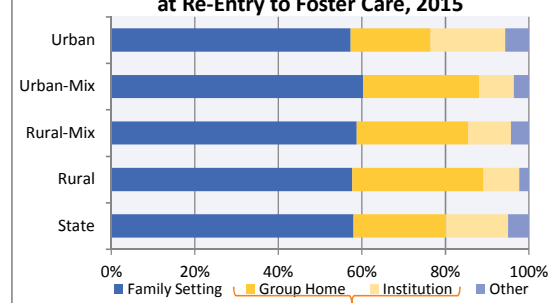
Rural-Mix Re-Entries into Foster Care by Age Group and Year of Re-Entry



Percent of Children Re-Entering Foster Care into Congregate Settings



Percent of Children by Placement Setting at Re-Entry to Foster Care, 2015



FOSTER CARE - GOALS

All children in foster care have a court-ordered permanency goal, which directs the efforts of the child welfare agency toward a certain family outcome for each child. This data provides information on the most recent goal for every child served in foster care during the federal fiscal year.

Indicator

Percent of Children by Case Plan Goal

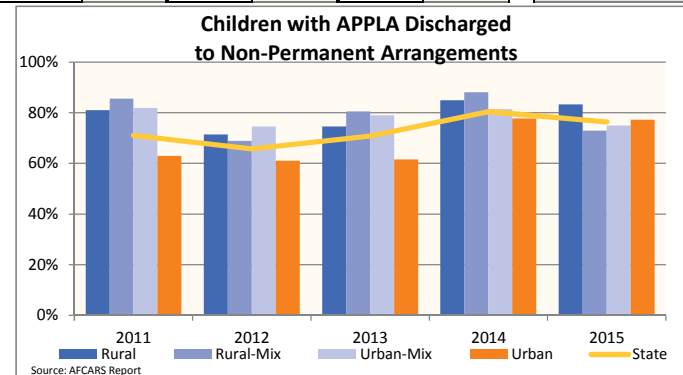
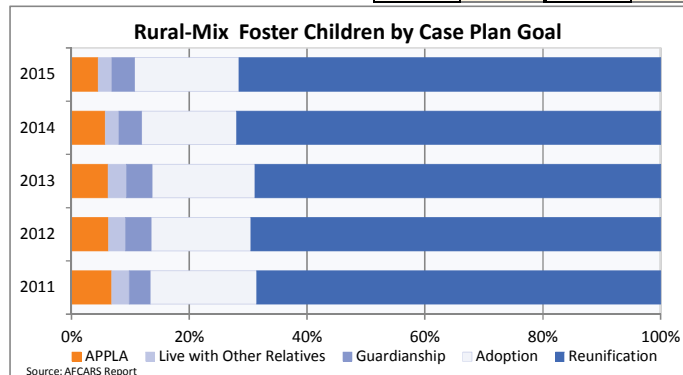
Indicator	2011		2012		2013		2014		2015		Rural-Mix % Change 2011 to 2015	State % Change 2011 to 2015
	Rural-Mix	State	Rural-Mix	State	Rural-Mix	State	Rural-Mix	State	Rural-Mix	State		
Permanency Goals	93.2%	91.0%	93.7%	90.9%	93.8%	92.8%	94.3%	93.6%	95.5%	95.2%	2.4%	4.5%
Reunify With Parent(s) or Principal Caretaker(s)	68.6%	68.0%	69.6%	69.6%	68.9%	70.5%	72.0%	72.6%	71.6%	73.1%	4.4%	7.5%
Adoption	18.0%	17.6%	16.8%	16.6%	17.4%	16.7%	16.0%	16.1%	17.6%	17.4%	-2.1%	-1.2%
Guardianship	3.6%	2.8%	4.4%	3.1%	4.4%	3.6%	3.9%	3.1%	3.9%	3.0%	8.6%	6.7%
Live with Relative(s)	3.0%	2.7%	2.9%	1.6%	3.1%	2.1%	2.3%	1.8%	2.3%	1.7%	-23.0%	-35.9%
Another Planned Permanent Living Arrangement (APPLA)	6.8%	9.0%	6.3%	9.1%	6.2%	7.2%	5.7%	6.4%	4.5%	4.8%	-33.3%	-46.1%
Long Term Foster Care	3.9%	3.4%	3.2%	3.2%	2.6%	2.1%	2.4%	1.8%	1.7%	1.2%	-55.7%	-64.8%
Emancipation	2.8%	5.5%	3.1%	5.9%	3.5%	5.1%	3.3%	4.6%	2.8%	3.6%	-2.1%	-34.5%

APPLA By Age as % of Age Group Served

Age Group	2011	2012	2013	2014	2015	Rural-Mix % Change 2011 to 2015	State % Change 2011 to 2015
0-15	1.1%	1.6%	0.9%	1.7%	0.6%	-62.7%	-75.2%
16-20	22.6%	27.0%	22.4%	28.4%	22.7%	-10.3%	-28.1%

APPLA By Discharge Reason

Discharge Reason	2011	2012	2013	2014	2015	Rural-Mix % Change 2011 to 2015	State % Change 2011 to 2015
Exit to Permanent Arrangements	14.4%	28.8%	31.1%	34.1%	19.5%	65.0%	-20.3%
Reunification	12.4%	23.9%	25.7%	29.6%	17.1%	28.3%	-26.2%
(number of months until reunification)	23.8	36.2	39.9	37.2	25.7	-57.4%	-23.9%
Adoption	0.0%	0.0%	0.0%	0.1%	0.0%	-	-
(number of months until adoption)	0.0	0.0	0.0	76.0	0.0	-	-
Guardianship	1.0%	2.1%	1.4%	1.7%	2.4%	361.9%	-32.3%
(number of month until guardianship)	120.3	38.7	8.5	35.3	32.0	-83.8%	-53.5%
Live with Other Relatives	1.0%	2.8%	4.1%	2.6%	0.0%	207.9%	30.6%
(number of months until living with relatives)	30.6	30.8	16.8	25.8	0.0	32.0%	20.3%
Exit to Non-Permanent Arrangements	85.6%	71.0%	68.9%	65.8%	80.5%	-14.7%	7.6%
Emancipation	79.4%	63.8%	66.2%	60.5%	69.5%	-12.0%	12.3%
(number of months until emancipation)	47.0	40.4	50.6	40.6	36.6	-19.8%	-15.0%
Transfer to Another Agency	3.1%	4.4%	0.0%	3.6%	6.1%	-48.7%	-39.2%
(number of months until transfer)	89.0	80.7	0.0	51.5	59.3	-68.3%	-49.6%
Runaway	3.1%	2.8%	2.7%	1.6%	4.9%	-48.7%	-27.5%
(number of months until running away)	30.4	37.9	8.6	8.9	24.7	-75.8%	-38.2%
Death of Child	0.0%	0.1%	0.0%	0.1%	0.0%	-	335.2%
(number of months until death of a child)	0.0	142.5	0.0	42.8	0.0	-	-93.7%



FOSTER CARE - EXITS

Data on foster care exits provides information on children who left foster care during the federal fiscal year, where they went when they left and how long their most recent episode of foster care was. A paramount goal of the foster care system is to assure every child has the lifelong support of a permanent family.

Indicator

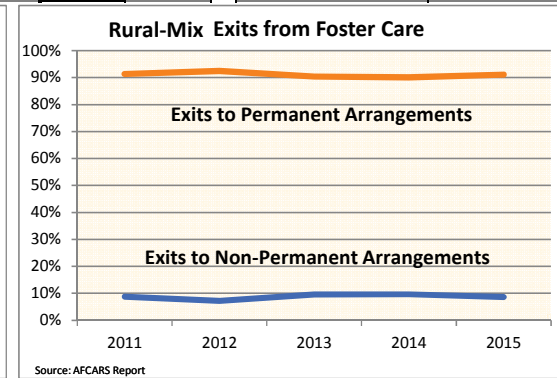
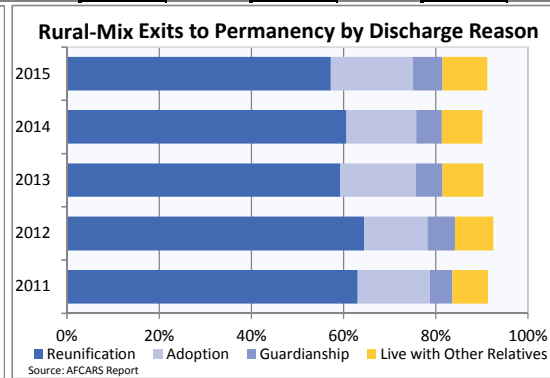
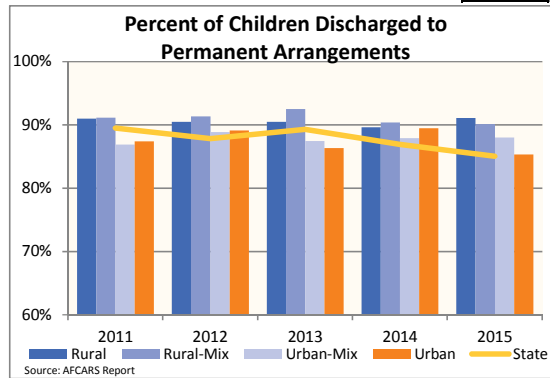
Children Exiting Foster Care

Total Children Leaving Foster Care
 Percent of Children Leaving Foster Care
 (number of months until leaving)

	2011		2012		2013		2014		2015		Rural-Mix % Change 2011 to 2015	State % Change 2011 to 2015
	Rural-Mix	State	Rural-Mix	State	Rural-Mix	State	Rural-Mix	State	Rural-Mix	State		
Total Children Leaving Foster Care	1,565	10,630	1,598	10,098	1,360	9,123	1,316	9,769	1,323	9,471	-15.5%	-10.9%
Percent of Children Leaving Foster Care	52.7%	46.7%	58.9%	45.9%	49.6%	42.6%	46.9%	43.4%	47.2%	41.2%	-10.5%	-11.8%
(number of months until leaving)	8.7	11.7	9.5	11.9	8.9	11.9	8.0	10.7	9.0	11.4	4.0%	-3.1%

By Discharge Reason

	2011	2012	2013	2014	2015	2011	2012	2013	2014	2015	Rural-Mix % Change 2011 to 2015	State % Change 2011 to 2015
Exit to Permanent Arrangements	91.3%	89.5%	92.5%	87.9%	90.4%	89.3%	90.1%	86.9%	91.2%	85.0%	-0.2%	-5.0%
Reunification	63.1%	59.3%	64.5%	60.1%	59.3%	57.3%	60.6%	57.2%	57.2%	54.5%	-9.3%	-8.2%
(number of months until reunification)	3.8	5.9	5.1	6.1	5.7	6.0	4.8	5.5	5.3	5.7	38.8%	-2.8%
Adoption	15.7%	18.8%	13.7%	18.0%	16.3%	20.2%	15.1%	18.6%	17.8%	18.7%	13.9%	-0.4%
(number of months until adoption)	33.2	29.6	31.7	27.6	28.5	26.7	31.5	27.4	29.9	28.3	-9.9%	-4.5%
Guardianship	4.9%	6.0%	6.0%	5.4%	5.8%	6.4%	5.5%	6.1%	6.4%	6.5%	32.3%	8.4%
(number of month until guardianship)	21.1	22.2	22.0	20.4	20.6	21.2	22.0	20.8	18.4	21.1	-12.7%	-5.2%
Live with Other Relatives	7.7%	5.4%	8.3%	4.4%	8.9%	5.5%	8.8%	5.0%	9.7%	5.4%	25.1%	-1.1%
(number of months until living with relatives)	10.1	2.7	3.4	2.7	6.5	2.6	3.5	1.0	4.1	3.0	-59.5%	11.0%
Exit to Non-Permanent Arrangements	8.7%	10.4%	7.2%	12.0%	9.6%	10.5%	9.7%	13.0%	8.6%	14.8%	-0.8%	41.9%
Emancipation	7.2%	7.8%	5.9%	8.0%	7.6%	8.1%	7.8%	7.7%	7.0%	7.8%	-2.6%	-0.6%
(number of months until emancipation)	39.3	36.8	40.6	37.4	26.4	31.4	23.4	29.6	27.2	28.1	-30.7%	-23.7%
Transfer to Another Agency	1.1%	2.2%	1.1%	1.6%	1.3%	2.0%	1.7%	4.3%	1.4%	5.8%	32.2%	166.9%
(number of months until transfer)	7.0	5.9	1.9	5.3	31.4	6.0	4.9	5.0	18.4	6.7	165.2%	12.2%
Runaway	0.4%	0.5%	0.3%	2.4%	0.7%	0.5%	0.2%	1.1%	0.2%	1.3%	-60.6%	174.9%
(number of months until running away)	34.8	18.6	26.1	4.8	19.7	14.9	39.9	13.2	3.7	15.5	-89.4%	-16.9%
Death of Child	0.0%	0.1%	0.3%	0.1%	0.1%	0.2%	0.2%	0.1%	0.2%	0.1%	-	161.9%
(number of months until death of a child)	0.0	12.7	7.0	4.7	11.5	11.9	45.6	30.9	42.2	4.9	-	-61.2%



FOSTER CARE - REMAINING IN CARE

Data on children remaining in foster care provides information on children who did not leave foster care during the year but are still in foster care on the last day of the federal fiscal year. This data includes all children in foster care on September 30. Some of these children may have just entered foster care days prior to the end of the fiscal year and others may have been in foster care for many years.

Indicator

Children Remaining in Foster Care

Children in Foster Care on Last Day
(number of months children have been in care)

Indicator	2011		2012		2013		2014		2015		Rural-Mix % Change 2011 to 2015	State % Change 2011 to 2015
	Rural-Mix	State	Rural-Mix	State	Rural-Mix	State	Rural-Mix	State	Rural-Mix	State		
Children Remaining in Foster Care	1,617 12.1	13,701 13.6	1,542 11.4	13,566 13.0	1,498 12.3	13,697 13.1	1,568 12.0	14,162 12.6	1,617 10.5	14,859 12.5	0.0% -13.3%	8.5% -8.2%

By Age

0-2
3-5
6-8
9-11
12-14
15-17
18-20
Infants (age 0-1)
Youth (age 13+)

Age Group	2011 Rural-Mix	2011 State	2012 Rural-Mix	2012 State	2013 Rural-Mix	2013 State	2014 Rural-Mix	2014 State	2015 Rural-Mix	2015 State	Rural-Mix % Change	State % Change
0-2	19.5%	18.9%	21.1%	19.5%	22.8%	19.9%	21.7%	20.0%	23.4%	21.0%	20.0%	10.8%
3-5	17.3%	14.6%	16.5%	15.3%	16.6%	15.6%	16.8%	16.7%	15.8%	16.7%	-8.2%	14.6%
6-8	10.9%	10.3%	11.5%	10.9%	13.1%	11.6%	13.3%	12.4%	11.6%	12.9%	6.2%	26.0%
9-11	8.1%	8.7%	8.9%	9.2%	8.0%	9.1%	11.0%	9.6%	10.6%	10.7%	31.3%	23.6%
12-14	13.3%	12.7%	12.6%	12.4%	11.3%	11.7%	11.2%	11.5%	13.2%	11.7%	-0.5%	-7.8%
15-17	26.0%	25.2%	24.0%	23.4%	23.1%	22.6%	21.1%	21.1%	20.6%	20.2%	-20.9%	-19.9%
18-20	4.9%	9.7%	5.4%	9.4%	5.0%	9.5%	4.9%	8.4%	4.7%	6.8%	-3.8%	-29.6%
Infants (age 0-1)	12.9%	12.6%	14.7%	13.2%	14.4%	12.7%	14.7%	13.2%	16.9%	13.9%	31.1%	10.5%
Youth (age 13+)	40.7%	44.4%	38.7%	41.9%	36.6%	40.7%	34.2%	37.8%	34.4%	35.2%	-15.5%	-20.6%

By Race and Ethnicity

Non-Hispanic White
Non-Hispanic Black or African American
Non-Hispanic Other Race
Non-Hispanic Two or More Races
Hispanic or Latino

Race/Ethnicity	2011 Rural-Mix	2011 State	2012 Rural-Mix	2012 State	2013 Rural-Mix	2013 State	2014 Rural-Mix	2014 State	2015 Rural-Mix	2015 State	Rural-Mix % Change	State % Change
Non-Hispanic White	75.8%	39.4%	75.7%	40.9%	74.8%	38.7%	74.9%	40.1%	75.8%	37.9%	-0.1%	-3.8%
Non-Hispanic Black or African American	14.8%	31.0%	14.2%	37.5%	13.9%	37.1%	13.0%	38.3%	11.2%	36.9%	-24.6%	19.1%
Non-Hispanic Other Race	1.1%	15.9%	1.4%	6.0%	1.5%	7.8%	1.2%	3.9%	1.2%	6.0%	17.6%	-62.5%
Non-Hispanic Two or More Races	2.1%	2.0%	2.8%	3.3%	4.1%	3.7%	4.6%	4.7%	6.3%	4.9%	200.0%	141.7%
Hispanic or Latino	6.2%	11.7%	5.9%	12.2%	5.7%	12.7%	6.3%	13.0%	5.5%	14.3%	-11.0%	23.0%

By Gender

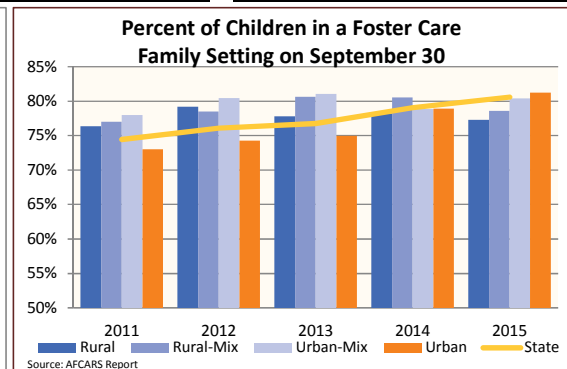
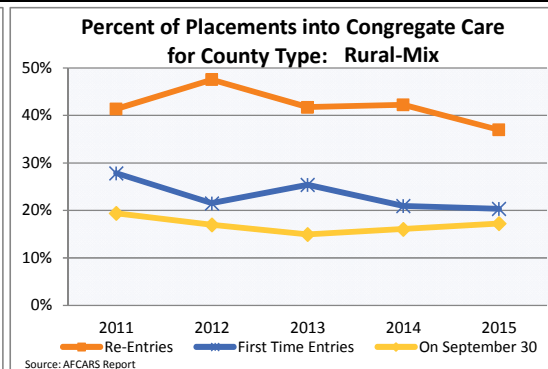
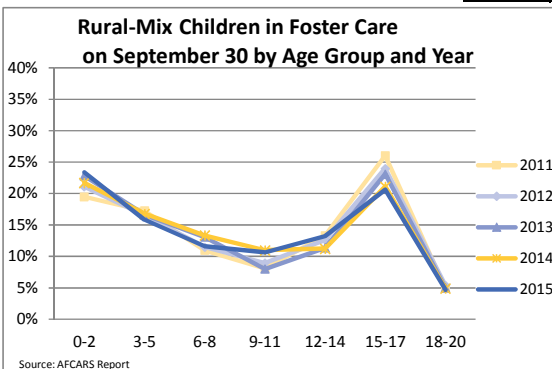
Male
Female

Gender	2011 Rural-Mix	2011 State	2012 Rural-Mix	2012 State	2013 Rural-Mix	2013 State	2014 Rural-Mix	2014 State	2015 Rural-Mix	2015 State	Rural-Mix % Change	State % Change
Male	50.2%	50.7%	53.1%	50.8%	52.7%	50.7%	54.0%	50.9%	54.1%	51.3%	7.8%	1.1%
Female	49.8%	49.3%	46.9%	49.2%	47.3%	49.3%	46.0%	49.1%	45.9%	48.7%	-7.8%	-1.1%

By Latest Placement Setting

Family Setting
Pre-adoptive Home
Foster Family Home – Relative
Foster Family Home – Non-Relative
Congregate Care
Group Home
Institution
Supervised Independent Living
Runaway
Trial Home Visit

Placement Setting	2011 Rural-Mix	2011 State	2012 Rural-Mix	2012 State	2013 Rural-Mix	2013 State	2014 Rural-Mix	2014 State	2015 Rural-Mix	2015 State	Rural-Mix % Change	State % Change
Family Setting	77.0%	74.4%	78.5%	76.1%	80.6%	76.8%	80.5%	79.0%	78.6%	80.6%	2.1%	8.3%
Pre-adoptive Home	1.9%	3.5%	1.4%	3.0%	1.5%	3.2%	1.9%	3.9%	1.3%	3.2%	-32.3%	-8.4%
Foster Family Home – Relative	16.6%	23.6%	19.1%	25.2%	19.4%	25.7%	22.1%	30.0%	23.9%	32.8%	43.5%	39.2%
Foster Family Home – Non-Relative	58.4%	47.3%	58.0%	47.9%	59.7%	47.9%	56.6%	45.1%	53.4%	44.5%	-8.6%	-5.9%
Congregate Care	19.4%	20.3%	17.0%	19.2%	15.0%	18.7%	16.1%	17.3%	17.3%	16.0%	-11.1%	-21.3%
Group Home	12.2%	10.7%	11.0%	11.0%	9.2%	10.8%	9.8%	10.6%	10.3%	9.0%	-16.2%	-16.5%
Institution	7.2%	9.5%	6.0%	8.2%	5.7%	7.8%	6.3%	6.7%	7.0%	7.0%	-2.6%	-26.7%
Supervised Independent Living	0.6%	2.2%	0.5%	1.9%	0.8%	2.1%	0.4%	1.7%	0.8%	1.4%	44.4%	-37.9%
Runaway	0.1%	1.8%	0.5%	1.8%	0.4%	1.4%	0.3%	1.1%	0.1%	1.1%	0.0%	-39.9%
Trial Home Visit	3.0%	1.2%	3.6%	1.1%	3.2%	1.0%	2.7%	0.8%	3.3%	1.0%	10.4%	-21.0%



FOSTER CARE - STABILITY

Every time a child moves, the trauma caused by separation and lack of continuity grows. A child who faces multiple placements struggles to build and maintain healthy relationships and faces academic challenges due to school changes.

Indicator

Foster Care Placement Stability

Children who were in foster care for 12 to 23 months and had three or more placement settings.

2011		2012		2013		2014		2015	
Rural-Mix	State	Rural-Mix	State	Rural-Mix	State	Rural-Mix	State	Rural-Mix	State
37.4%	36.1%	37.2%	36.9%	38.4%	34.1%	37.5%	32.7%	35.6%	32.8%

Rural-Mix % Change 2011 to 2015	State % Change 2011 to 2015
-4.7%	-9.3%

FOSTER CARE - TIMELY REUNIFICATION

A child's separation from his or her parents or relatives is traumatic for all involved. Minimizing the time a child spends in foster care without compromising safety is key to healthy child development.

Indicator

Timely Reunification with Parents or Relatives

Children who entered foster care for the first time who were reunified with their parents or discharged to relatives within the next 12 months.

2011		2012		2013		2014		2015	
Rural-Mix	State	Rural-Mix	State	Rural-Mix	State	Rural-Mix	State	Rural-Mix	State
57.3%	48.2%	53.7%	44.6%	50.9%	41.3%	45.9%	39.7%	49.5%	39.0%

Rural-Mix % Change 2011 to 2015	State % Change 2011 to 2015
-13.5%	-19.0%

FOSTER CARE - FAILED REUNIFICATION

A child re-entering foster care following a return to his or her family signals a breakdown in the family and a potential failure on the part of the child welfare system to appropriately address family needs.

Indicator

Failed 1-Year Reunification (Re-entry)

Children who re-entered foster care in fewer than 12 months following reunification with parents or relatives. (Data may be overstated.)

2011		2012		2013		2014		2015	
Rural-Mix	State	Rural-Mix	State	Rural-Mix	State	Rural-Mix	State	Rural-Mix	State
19.3%	27.7%	23.1%	26.3%	20.4%	26.4%	21.0%	26.9%	17.7%	24.1%

Rural-Mix % Change 2011 to 2015	State % Change 2011 to 2015
-8.1%	-12.9%



We gratefully acknowledge the support of The Annie E. Casey Foundation's KIDS COUNT Project, The Heinz Endowments, Highmark, PNC Financial Services Group and Richard King Mellon Foundation.



The Porch Light Project
Pennsylvania Partnerships for Children
116 Pine Street, Suite 430
Harrisburg, PA • 17101-1244
porchlightproject.org
717.236.5680 • 800.257.2030