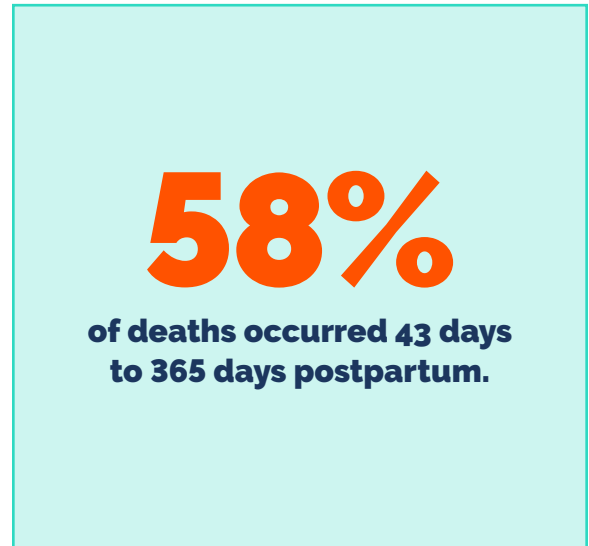
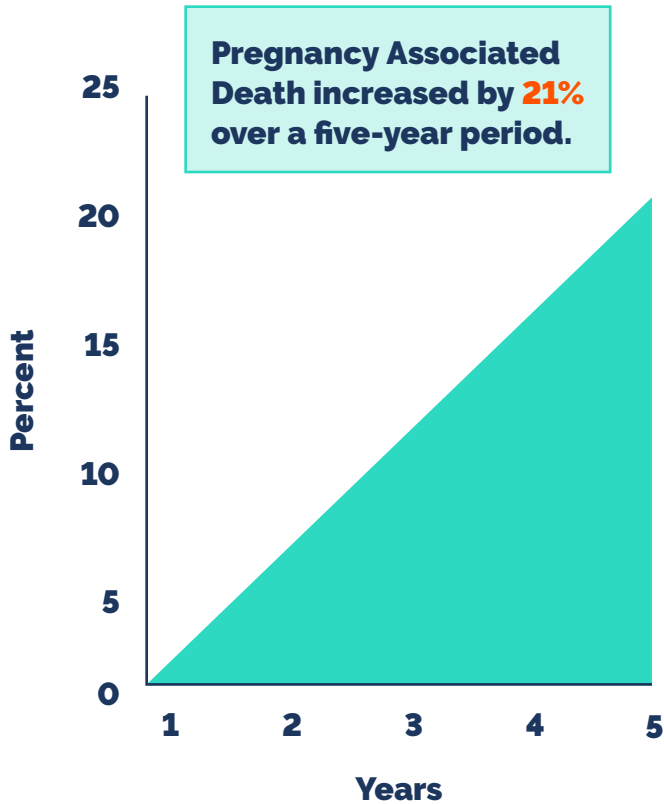
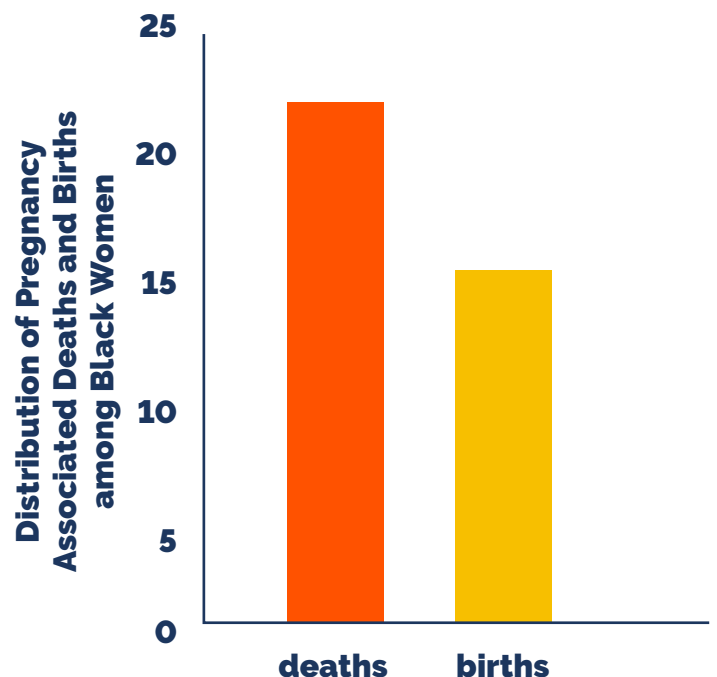


In Pennsylvania maternal mortality is on the rise



Disparities persist

Racial/ethnic disparities exist among pregnancy-associated deaths in Pennsylvania. Non-Hispanic Blacks accounted for **23%** of pregnancy-associated deaths in Pennsylvania from 2013 to 2018, while only accounting for **14%** of births in Pennsylvania during this time period.

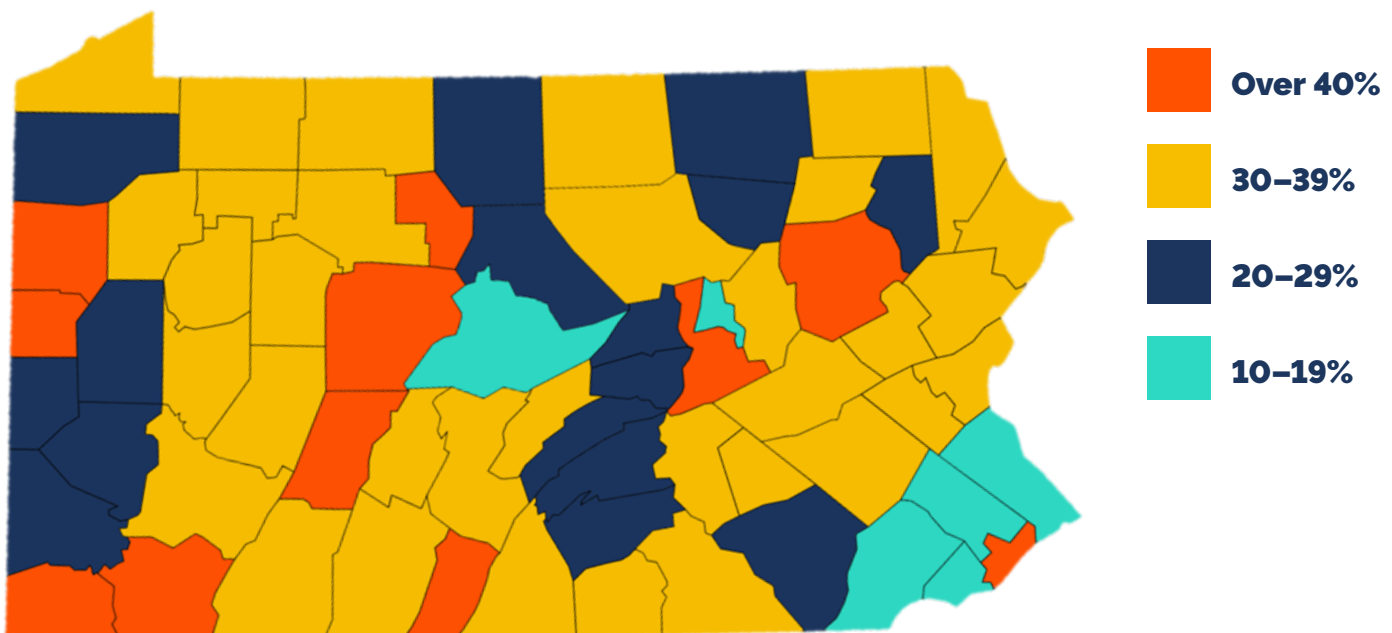


Of the pregnancy-associated deaths with payment information for the birth, 53% of the births were paid by Medicaid, while only 32% of all births in Pennsylvania during this period were paid for by Medicaid.

Medicaid Births by County

Counties with the highest percentage of births funded by Medicaid are spread across Pennsylvania's rural and urban areas.

With over one-third of Pennsylvania's births paid for by Medicaid, expanding and enhancing access to high-quality care up to one year after birth is a key strategy for mitigating maternal mortality and morbidity.



For more information please contact: Sara Jann, Director of Policy & Advocacy, Maternity Care Coalition at sjann@maternitycarecoalition.org. To learn more about Thriving PA, please visit <https://thrivingpa.org/>.