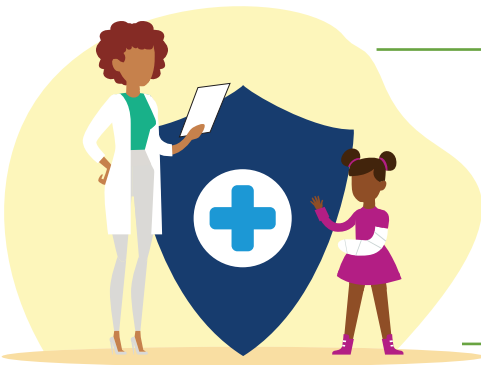


Medicaid and CHIP Provide Quality Health Insurance for Half of Pennsylvania Kids

At Pennsylvania Partnerships for Children, our goal is for every child to have health insurance that provides regular access to quality medical care for physical and mental health.

Medicaid and the Children's Health Insurance Program (CHIP) play a crucial role in keeping kids covered and healthy in every community across Pennsylvania from our rural communities to large cities.

Through these options, 47% of Pennsylvania kids have access to preventive care like well check-ups and vaccinations, and to ongoing care for chronic conditions such as epilepsy, diabetes, depression, or autism.



More than 1.3 million children – or nearly half of all children in Pennsylvania – are enrolled in Medicaid or CHIP

Impact of H.R. 1 on PA's Budget and Coverage for Families

Deep cuts to Medicaid spending and changes to eligibility rules included in the federal reconciliation bill (H.R. 1) passed in July 2025 threatens to negatively impact Pennsylvania children and their families in the coming years.

Pennsylvania is projected to lose **\$46 billion** in critical federal funding.ⁱ Medicaid cuts will strain the entire health care system.

Approximately **390,000** Pennsylvanians are projected to lose their Medicaid insurance.ⁱⁱ People's health care needs will not change, but now Pennsylvania will have far less money from the federal government to cover them.

It is more important than ever not to lose ground on public health insurance options that help children thrive and build stronger, healthier communities.

As policymakers, we urge you to commit to keeping Medicaid strong for Pennsylvania's working families.

- ✓ **Keep Medicaid funded**
- ✓ **Preserve health care for kids**
- ✓ **Protect core services and PA hospitals**

ⁱ <https://www.kff.org/medicaid/allocating-cbos-estimates-of-federal-medicaid-spending-reductions-across-the-states-enacted-reconciliation-package/>

ⁱⁱ <https://www.kff.org/uninsured/how-will-the-2025-reconciliation-law-affect-the-uninsured-rate-in-each-state/>

Pennsylvania Children Enrolled in Medicaid and CHIP by Congressional District

District	Party Affiliation	Member of Congress	MA Enrollment <19 Years (Sep 2025)	CHIP Enrollment <19 Years (Sep 2025)	Total Child Enrollment (Sep 2025)	Estimated Percent of Child Population	Estimated Percent of Total Population
1	R	Fitzpatrick	42,572	9,736	52,308	32%	6.8%
2	D	Boyle	126,288	12,924	139,212	76%	18.2%
3	D	Evans	97,999	9,090	107,089	74%	14.0%
4	D	Dean	41,550	8,877	50,427	30%	6.6%
5	D	Scanlon	73,238	10,741	83,979	46%	11.0%
6	D	Houlahan	55,803	9,926	65,729	35%	8.6%
7	R	Mackenzie	67,036	11,729	78,765	47%	10.3%
8	R	Bresnahan	81,367	11,012	92,379	58%	12.1%
9	R	Meuser	67,887	10,463	78,350	48%	10.2%
10	R	Perry	74,824	11,490	86,314	50%	11.3%
11	R	Smucker	54,311	12,325	66,636	36%	8.7%
12	D	Lee	62,640	7,922	70,562	49%	9.2%
13	R	Joyce	64,401	11,531	75,932	46%	9.9%
14	R	Reschenthaler	62,618	9,389	72,007	48%	9.4%
15	R	Thompson	53,229	8,543	61,772	41%	8.1%
16	R	Kelly	67,436	8,620	76,056	46%	9.9%
17	D	Deluzio	45,651	7,379	53,030	34%	6.9%
Statewide	D	Sen. Fetterman	1,138,850	171,697	1,310,547	47%	10.1%
Statewide	R	Sen. McCormick					

Note: The totals above will not match the counts provided monthly by the Pennsylvania Department of Human Services due to report timing differences and the inability to assign legislative districts to 83 CHIP enrollees. Monthly Medicaid child enrollment includes youth ages 19-20: an additional 101,138 youth ages 19-20 were served in September 2025. CHIP data does not reflect the 3,053 youth who turned 19 in September 2025.



200 N. 3rd St., Suite 1300A
Harrisburg, PA 17101

717-236-5680 | www.papartnerships.org

Source: Pennsylvania Partnerships for Children analysis of data provided by the Pennsylvania Department of Human Services and the US Census Bureau.